

# **LITTLE ANGELS' COLLEGE OF MANAGEMENT**

## **AFFILIATED TO KATHMANDU UNIVERSITY**

### **HATTIBAN, LALITPUR, NEPAL**

Campus Network  
At a Glance

---

Vipul Gautam  
Manager, Information Technology

# CONNECTIVITY

---

- ✗ We are externally connected via ISP (Namche):
  - + Main Link is Optical fiber and Backup is Radio Link
  - + If main link fails, it's automatically switched to backup
- ✗ Single Router is used in the whole campus network
  - + Different network for different units
- ✗ Static Routing
- ✗ Public IP Address got from ISP
- ✗ For Wi-Fi -> Hotspot is used

# EQUIPMENTS USED

---

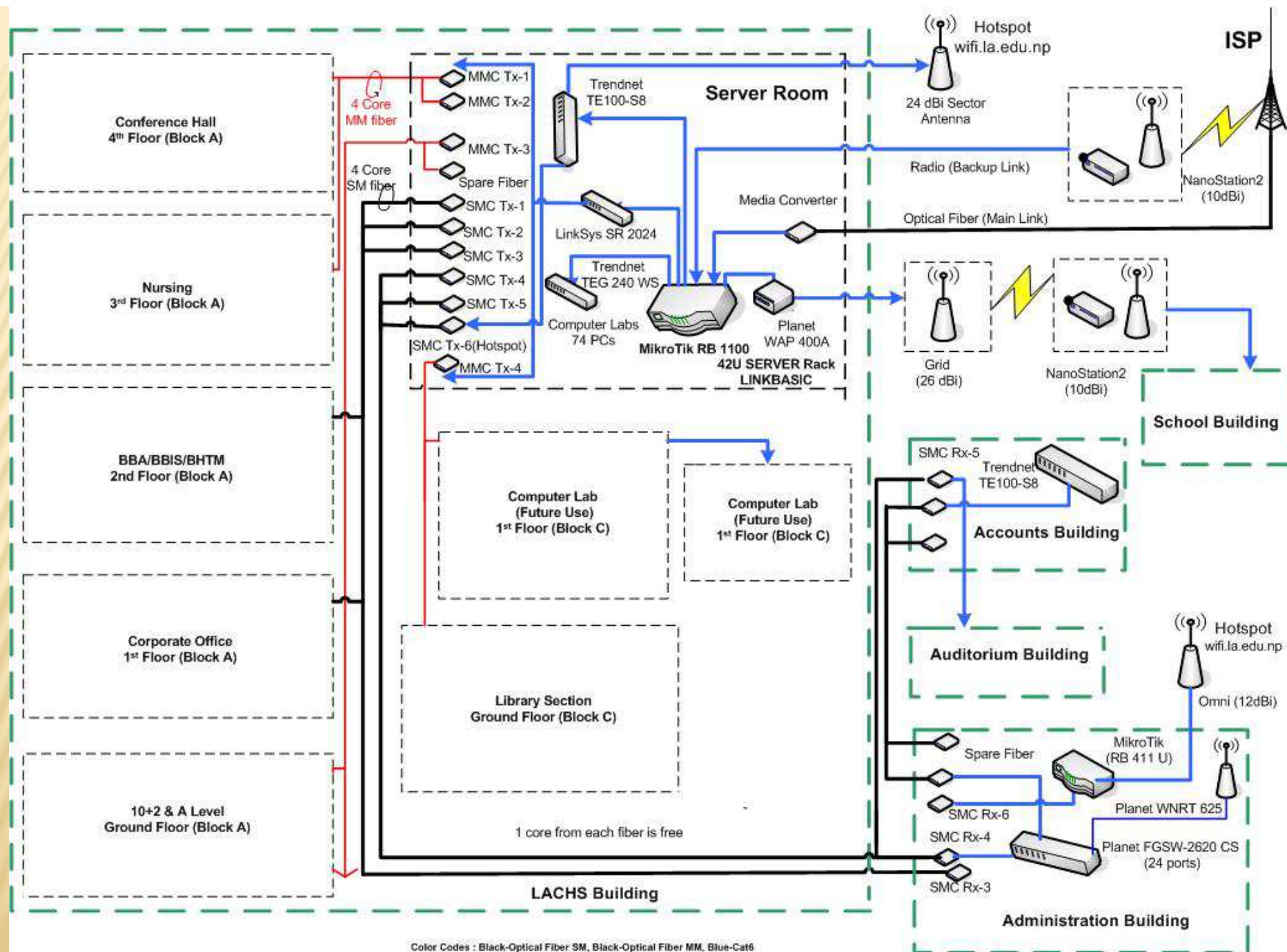
- ✖ Routers
  - + MikroTik Router Board 1100 U
  - + Planet WNRT
- ✖ Access Points
  - + MikroTik RB 411
  - + NanoStation2
  - + TP Link
  - + Planet
- ✖ Switches
  - + LinkSys (CISCO)
  - + Trendnet
  - + Planet
  - + TPLink
  - + DLink
  - + Compex
- ✖ Media Converters
  - + ELinx
  - + Trendnet



# CHALLENGES

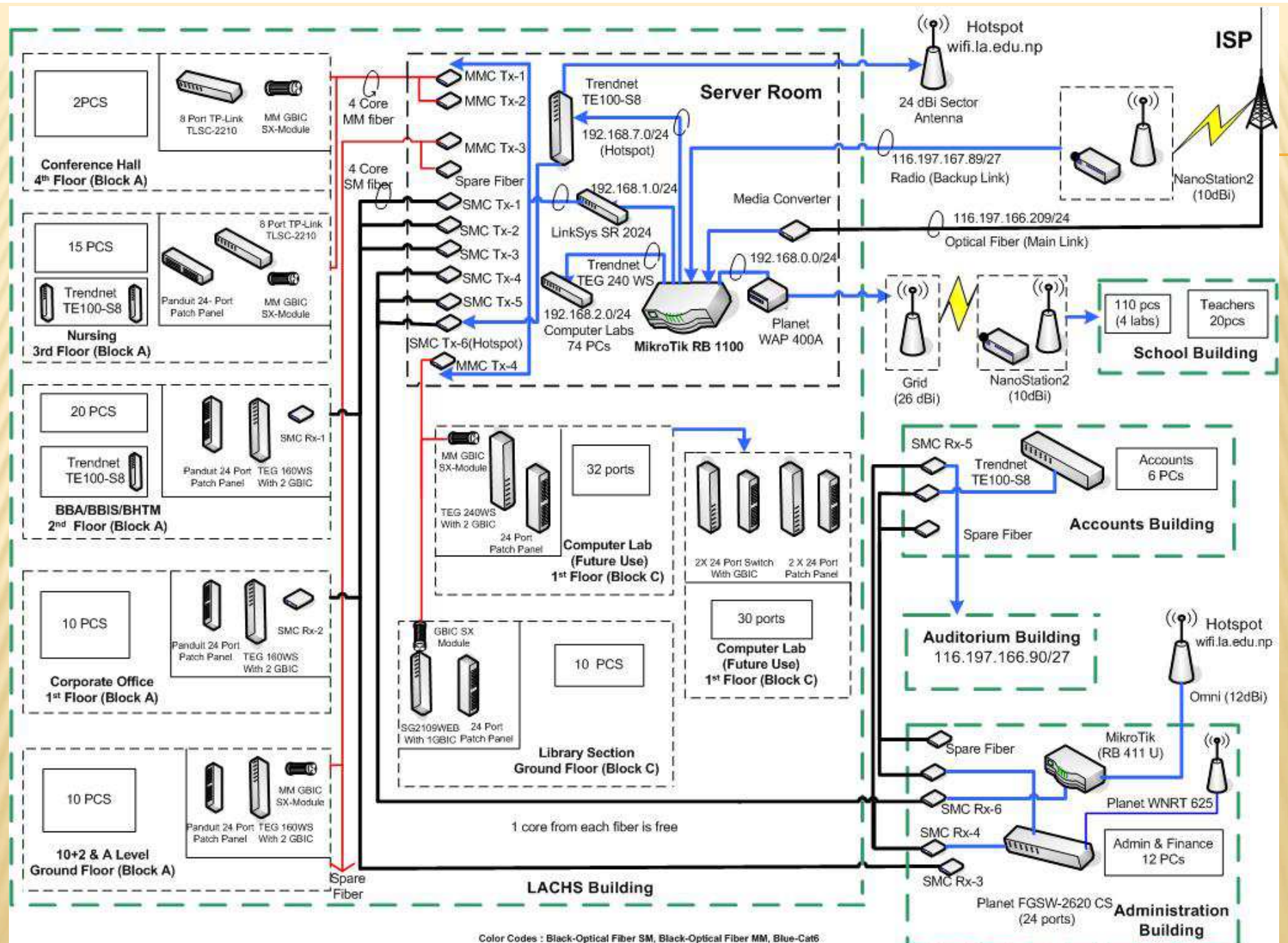
---

- ✗ Bandwidth Management
- ✗ Blocking of sites
- ✗ Fast and efficient monitoring mechanism
- ✗ Wi Fi coverage in every nook and cranny of campus



**Fig. Physical Diagram for Campus Area Lan and WLAN Design Using Ethernet Cat 6 and Fiber Network**





**Fig. Schematic Diagram for Campus Area Lan and WLAN Design Using Ethernet Cat 6 and Fiber Network**

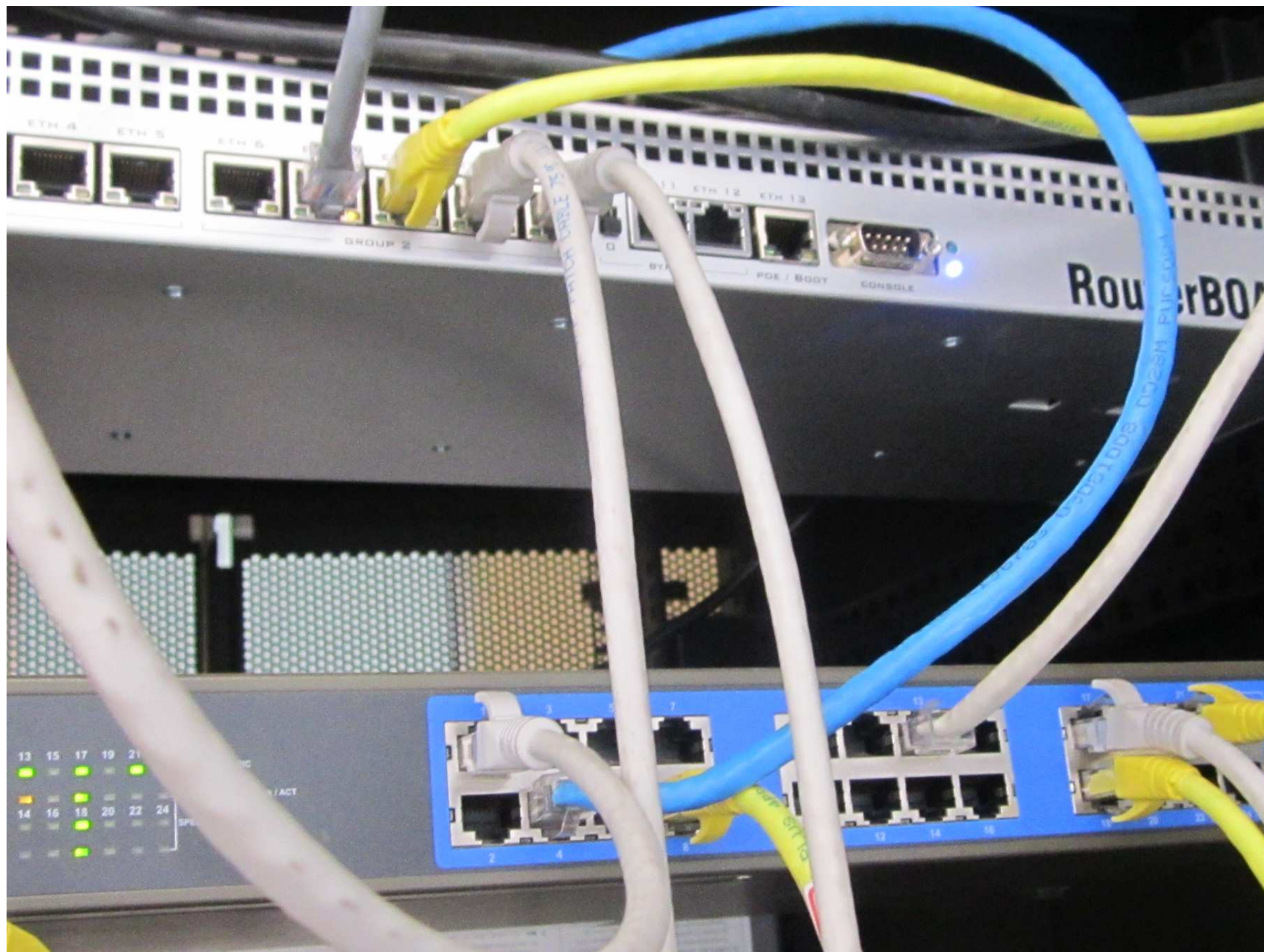










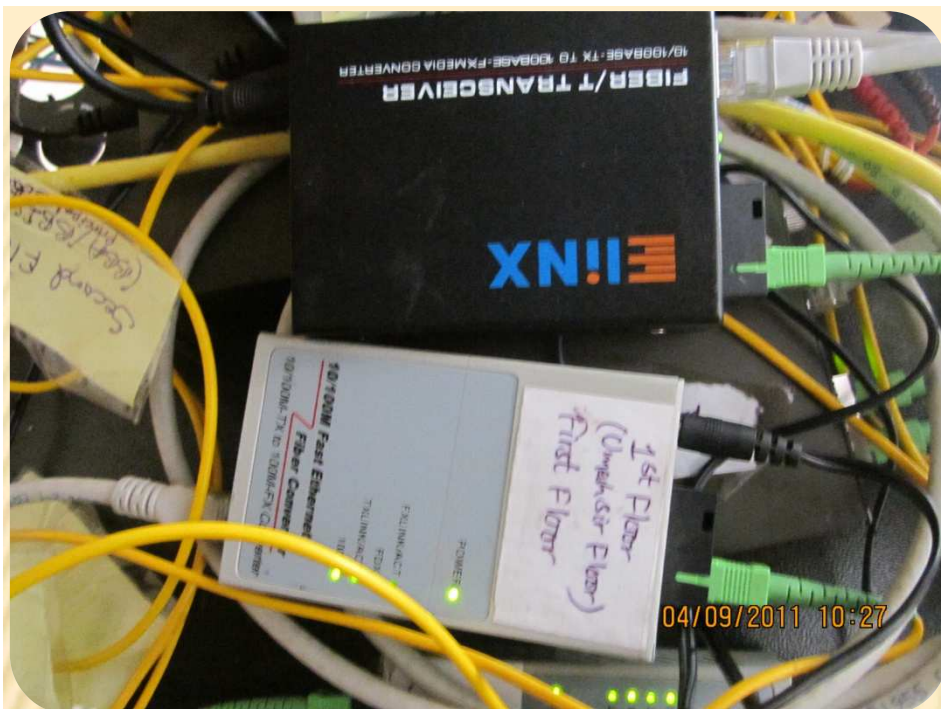


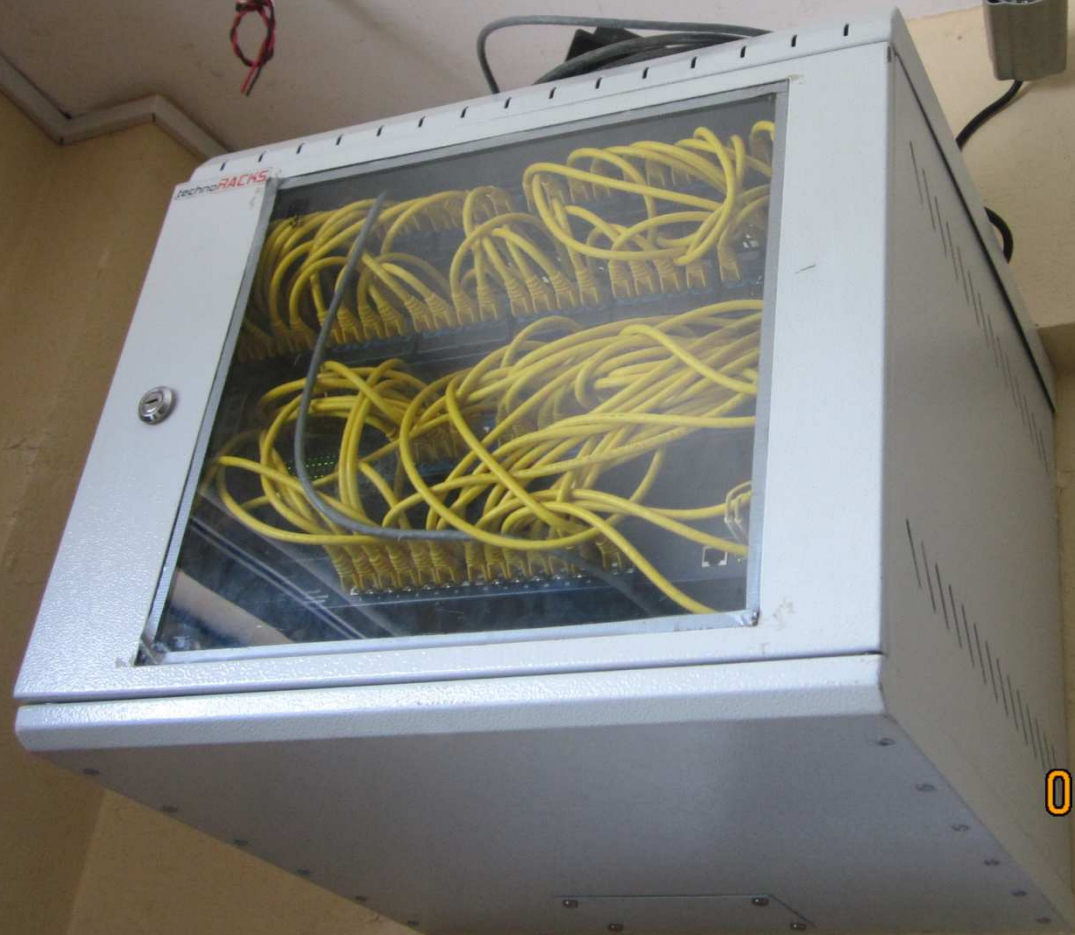




04/09/2011 10:29







01/09/2011 09:57













05/09/2011 09:24





---

**THANK YOU**