

❖ **General questions:**

- **How many devices in the campus? [should probably explicit device, as in: only hosts and net eqpt, or everything, including printers, wireless devices, etc...]**

- 320 Computers;
- 8 Servers;
- 12 Switches;
- 1 Router;
- 1 ASA;
- 51 Access Point;
- 40 Printers ( 7 Network printers, 33 Local printer).

- **How many buildings? Distances between them, if known ?**

3 Administration buildings and 4 boarding of students

- **Fiber links between the buildings ?**

Yes we have a fiber link between the mean and the other buildings

❖ **Internet**

- **External connectivty ? Type, capacity ?**

We are linked by LS 8 Mbps

- **Are you providing routes to your upstream provider, or are they statically routed to you?**

Routed statically

❖ **IP addressing:**

- **Could we get an IP address map ? A description of how are subnets used?**

We have one subnet 10.10.0.0/16 for the administrative stuff and the class room

And another net for the student boarding 192.168.0.0/16

- **Is there an addressing plan ?**

- **Are the IP addresses assigned by their ISP, or have they got a Provider Independent (PI) allocation?**

We use DHCP internal server to distribute ip addresses

- **Are private or public (routable) IP addresses being used inside the network?**

We use public addresses in the DMZ Zone for the web servers

**- Are you using one or more layers of NAT ?**

We don't use NAT

\* Routing vs switching:

**- Is the core L3 or L2 (routed or switched)?**

Switched

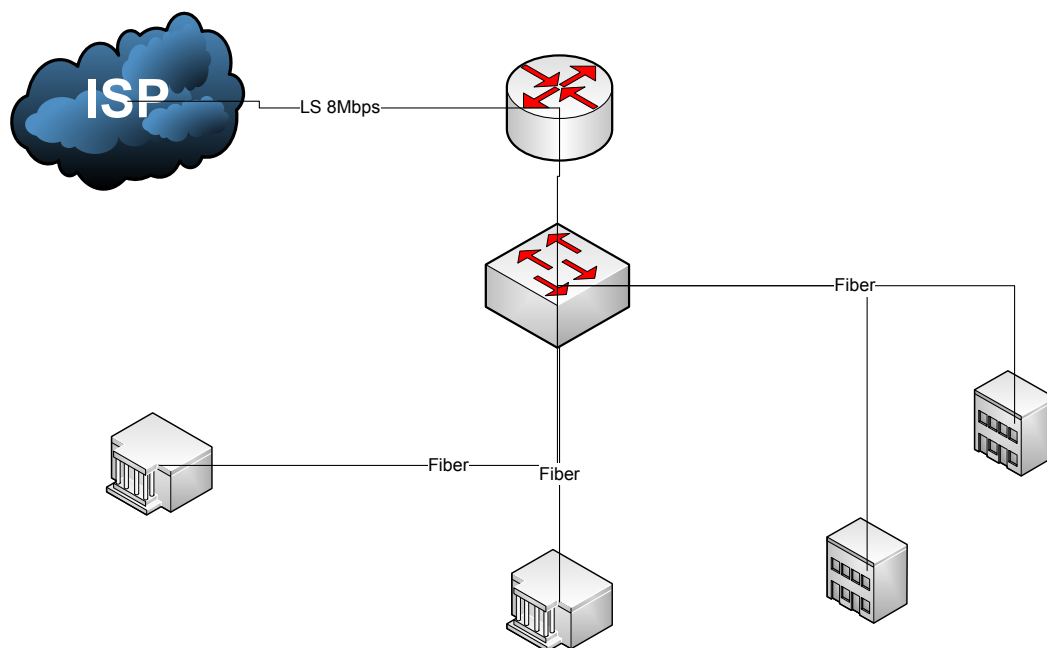
**- What kind of routing protocols, if any?**

We use only static routing in the router.

**- Is Spanning Tree enabled in the network?**

NO

❖ Physical diagram



## ❖ Layer 2/3 Diagram

