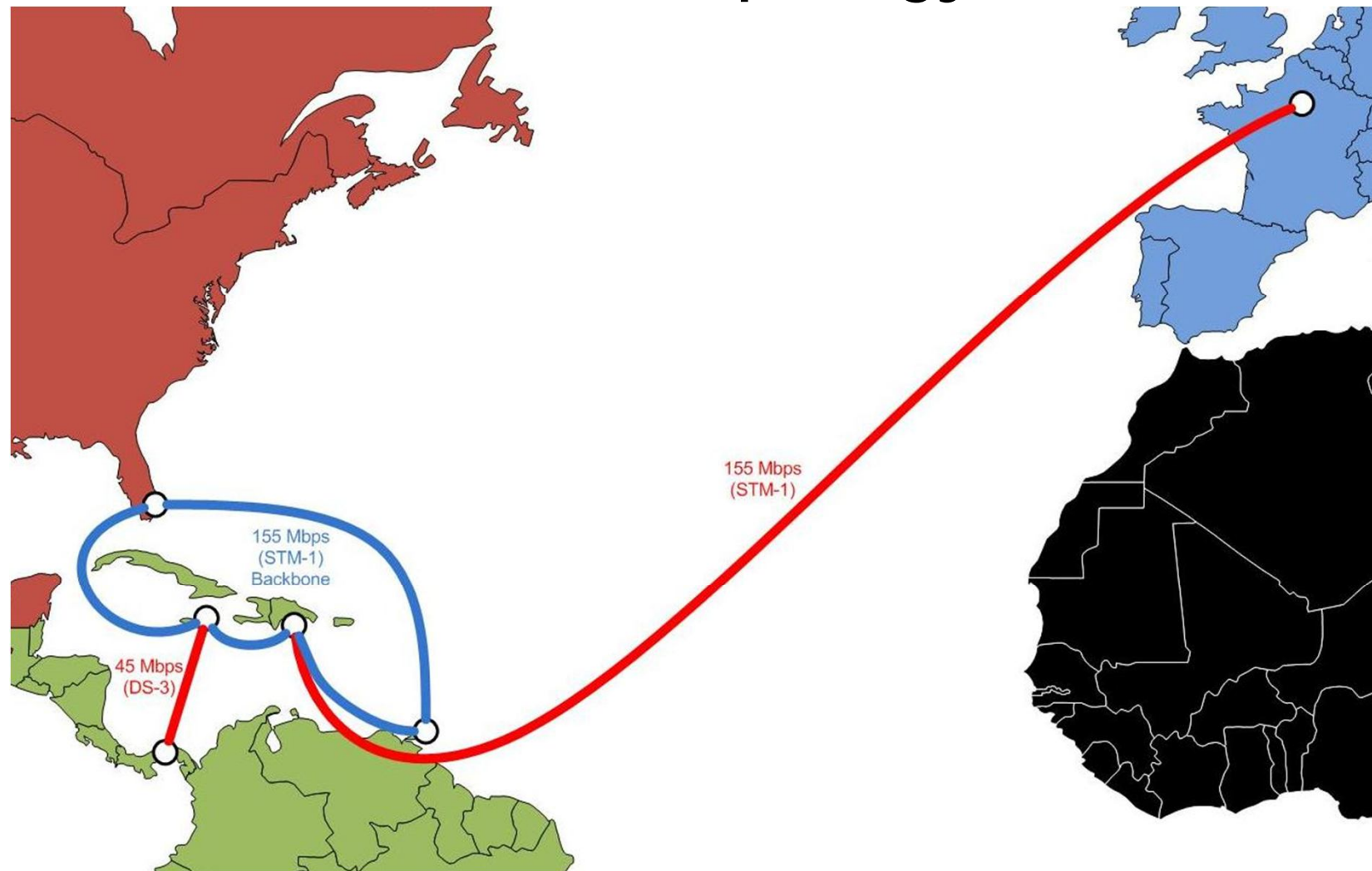


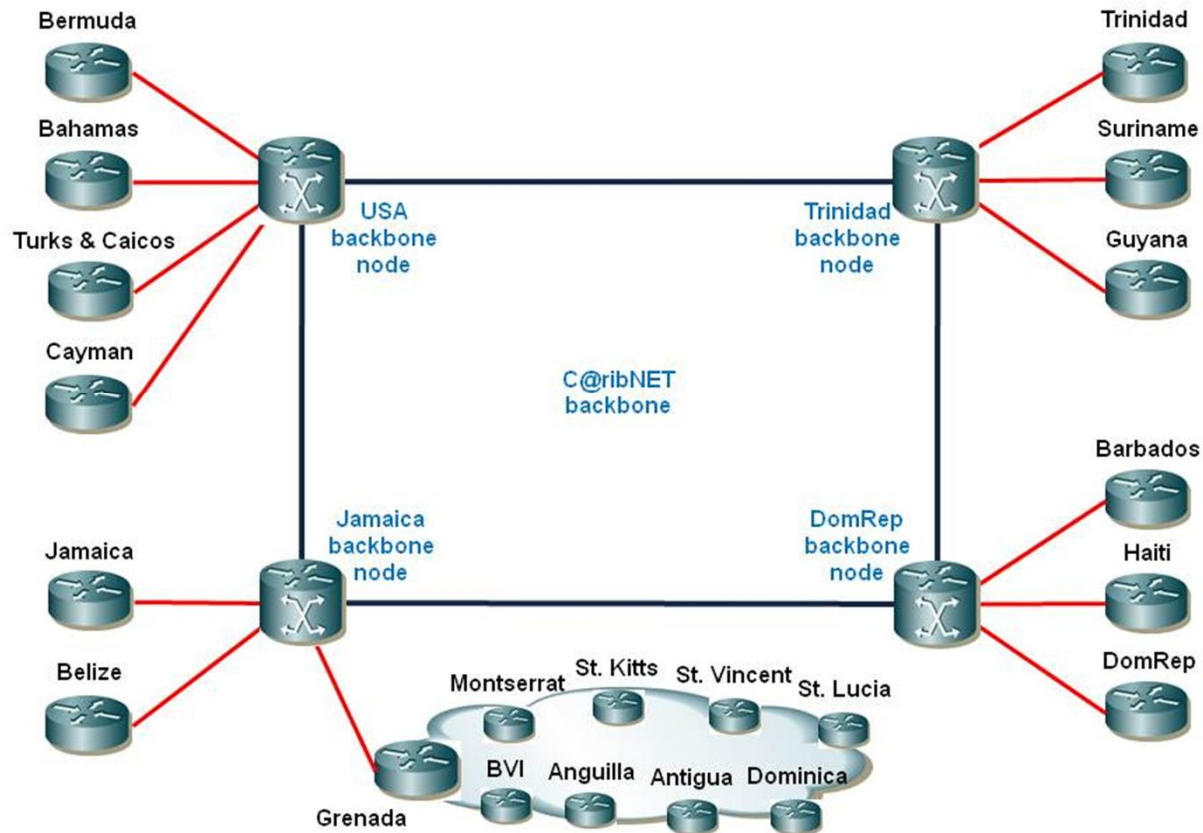
# C@ribNET & NREN Configuration

Eriko Porto (eriko.porto@ckln.org)  
Technical Manager  
Port of Spain  
February/2013

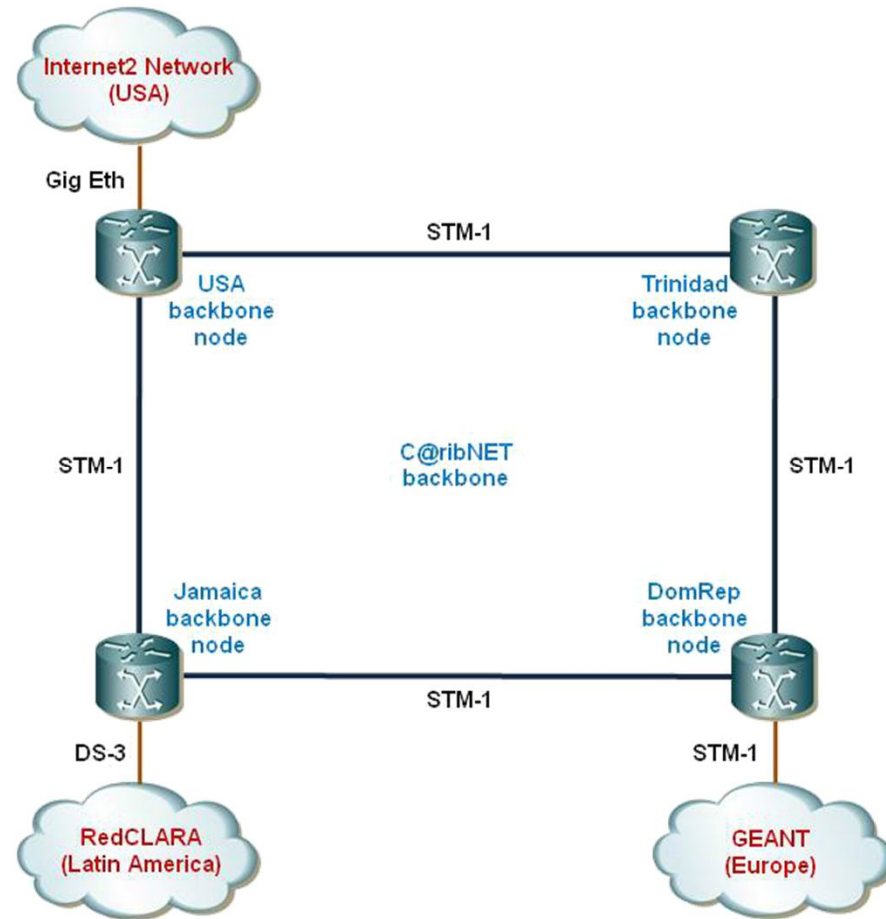
# Global Topology



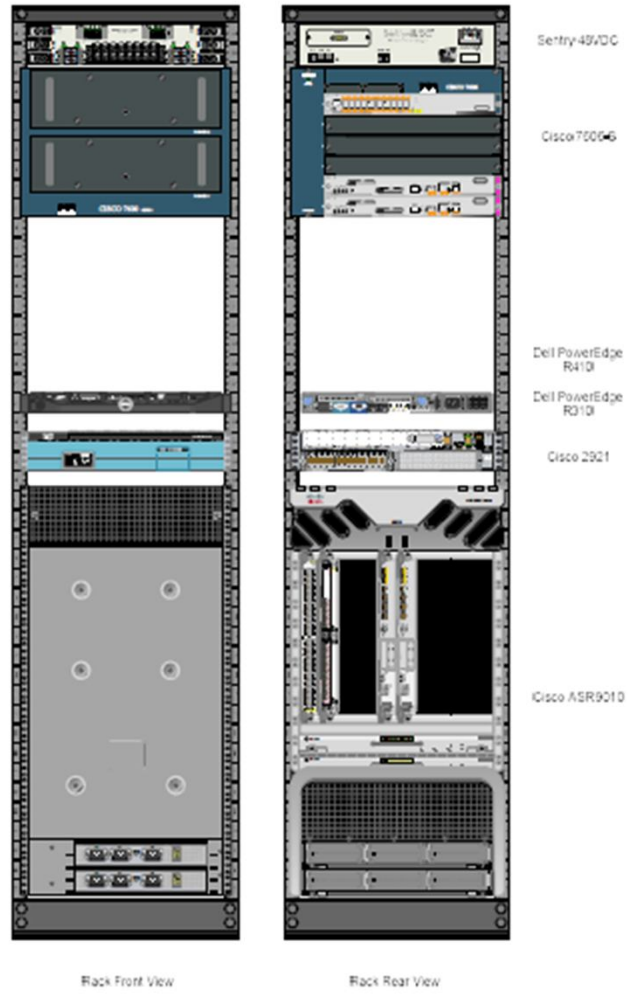
# Connectivity Diagram



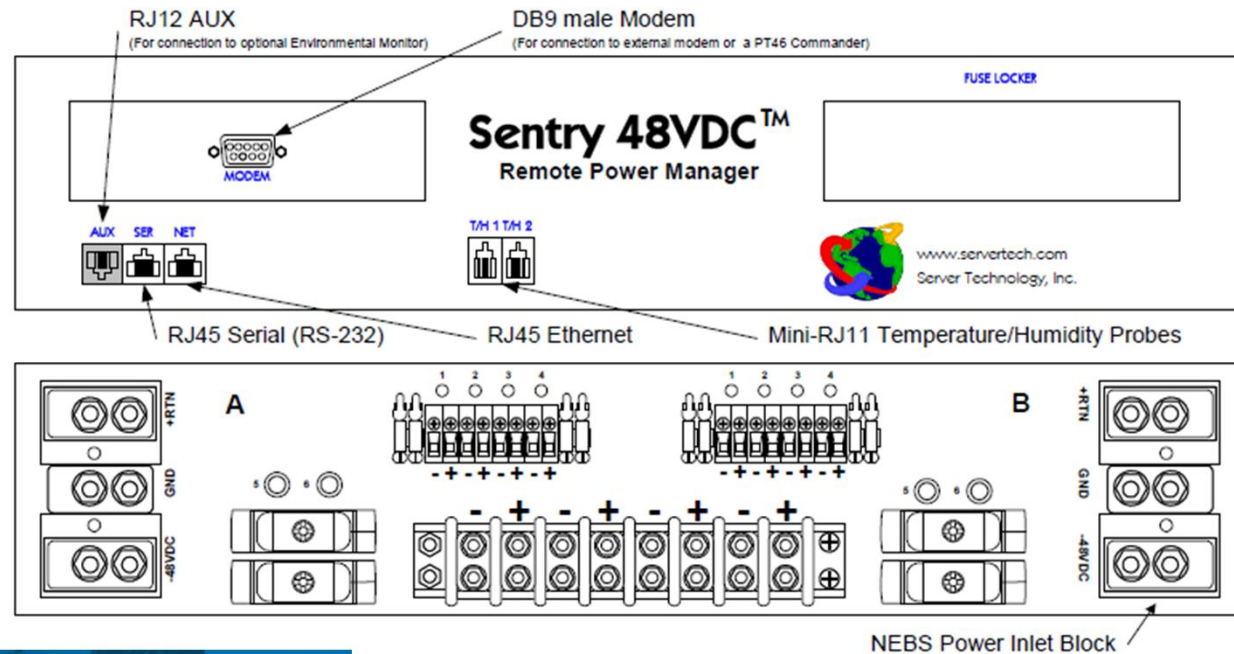
# C@ribNET PoPs (Points of Presence)



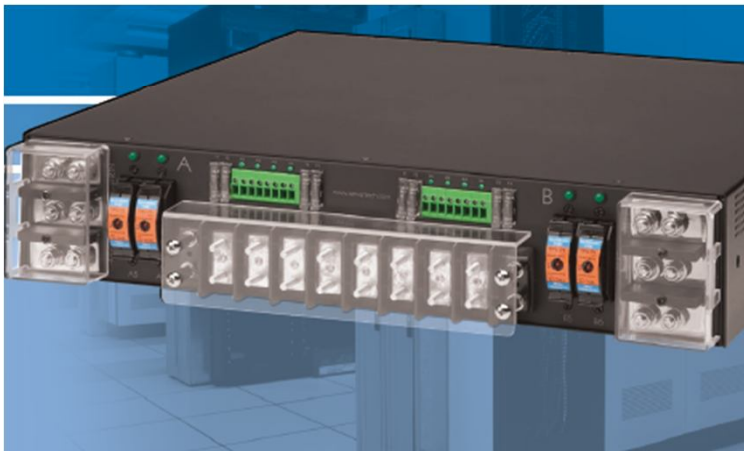
# PoP Configuration



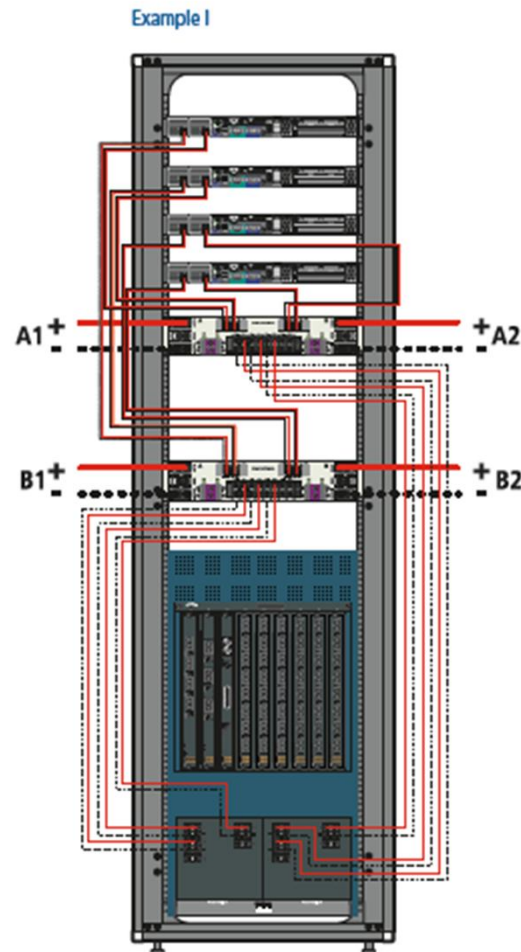
# Sentry PDU



4805/35-XLS-12

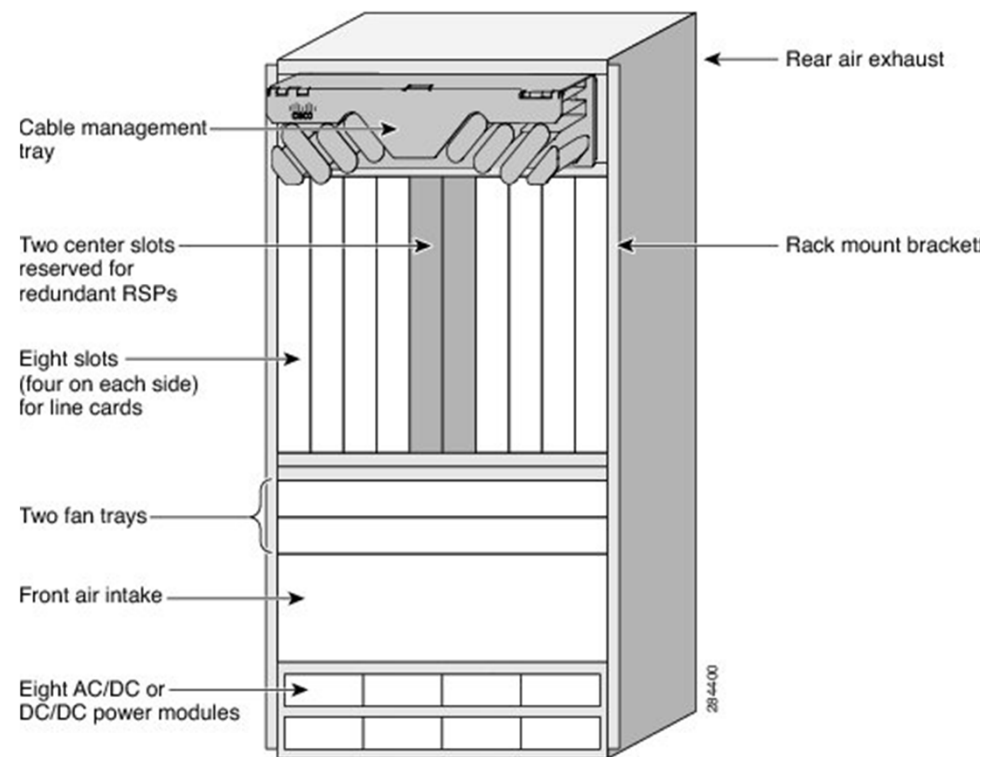
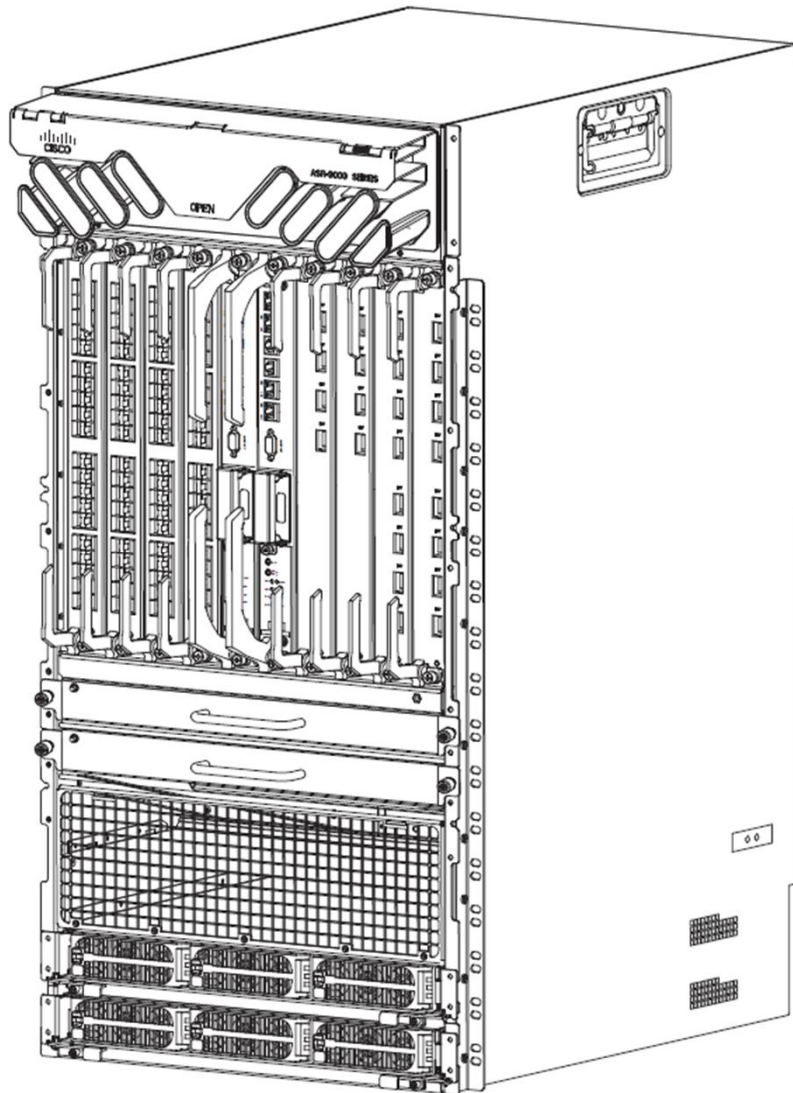


# Sentry PDU – Power Feed Connections



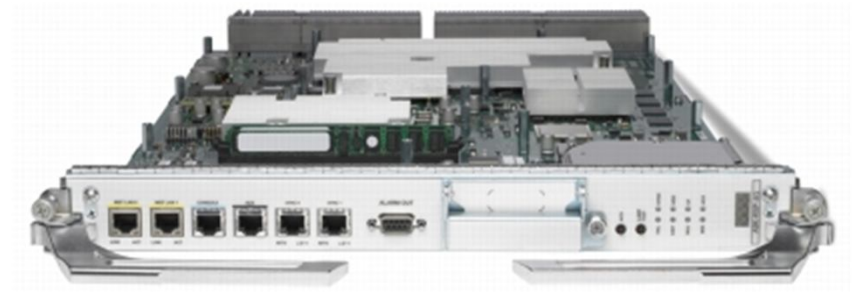
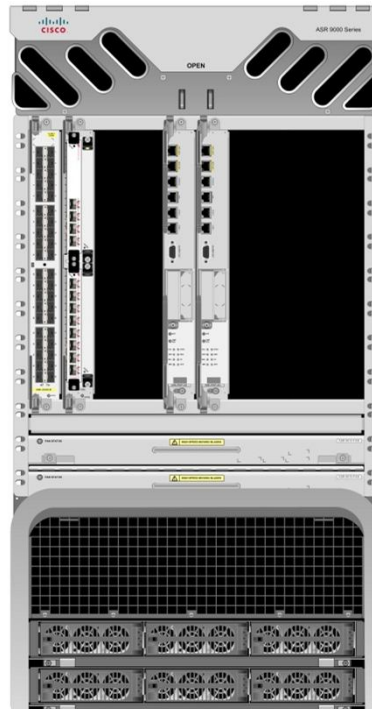
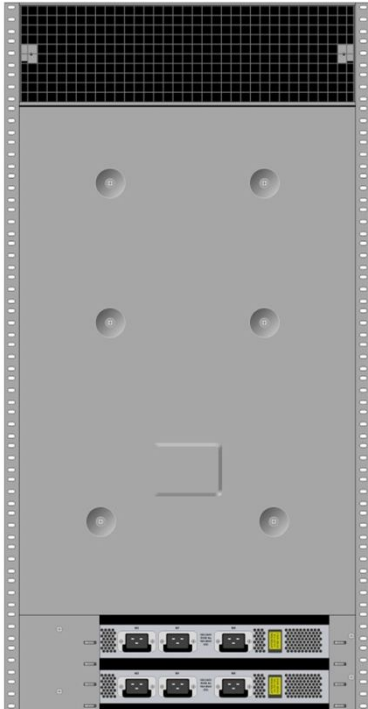


# ASR 9010

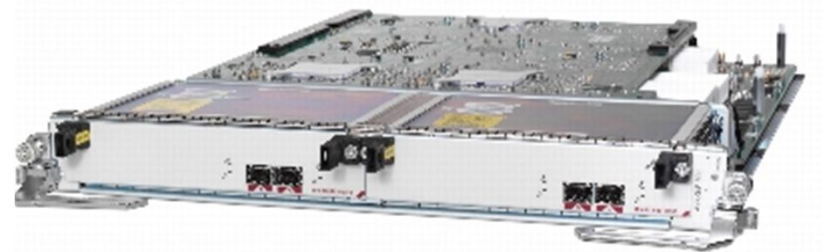




# ASR 9010 – C@ribNET Backbone Node



Route Switch Processor (RSP) Card

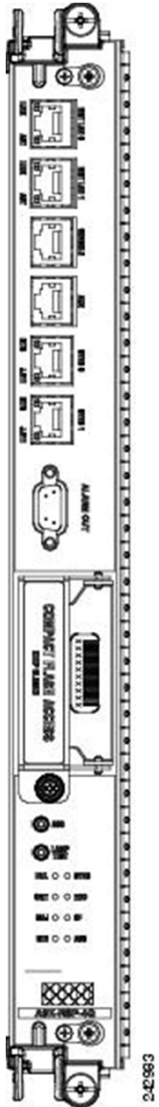


SIP-700



40-Port Gigabit Ethernet

# Route Switch Processor (RSP)



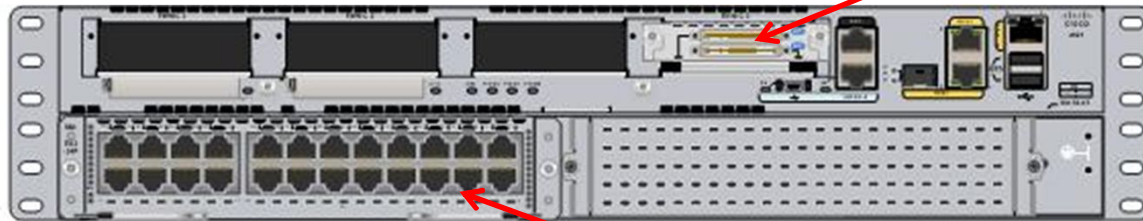
- **RSP Cards Front Panel and Access Ports**

- System alarms reside on the RSP
- Alarms consist of visual indicators with three levels: Critical (red), Major (red), and Minor (yellow).
- There is a console interface for remote viewing of alarms and fault information.
- The RSP has the following information and alarm LEDs and connectors:
  - One external Compact Flash type I/II
  - Two EIA/TIA-232 RJ232 serial RJ-45 ports (Console and Auxiliary modem ports)
  - Two triple speed 10/100/1000Mbit Ethernet Management ports
  - One 4 character 5x7 LED dot matrix display and discrete status LEDs
  - Alarm Cut Off/Lamp test momentary push button switch
  - Two RJ-45 Sync timing ports with Link and Fault LEDs built into the RJ-45
  - Alarm Output DB9 port with 3 alarm outputs

# Cisco 2921



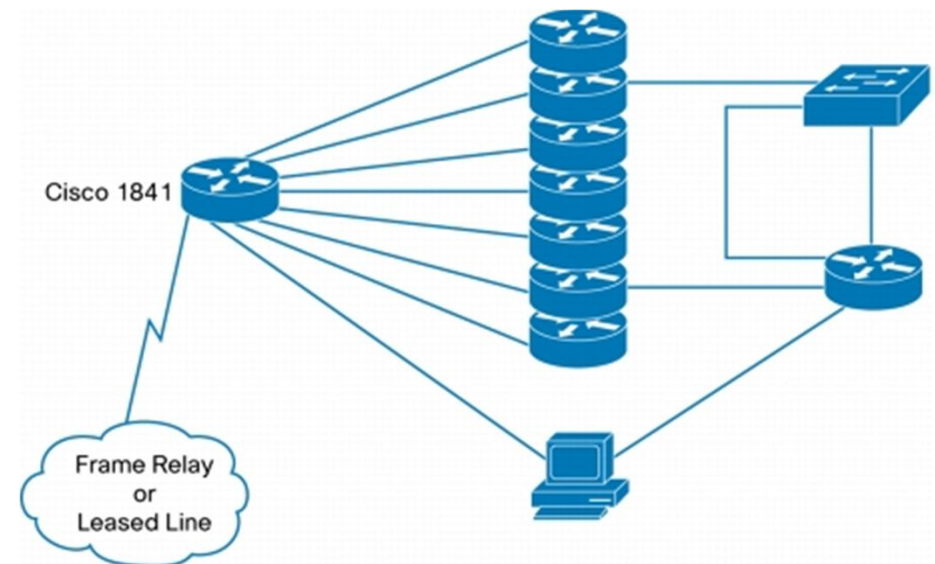
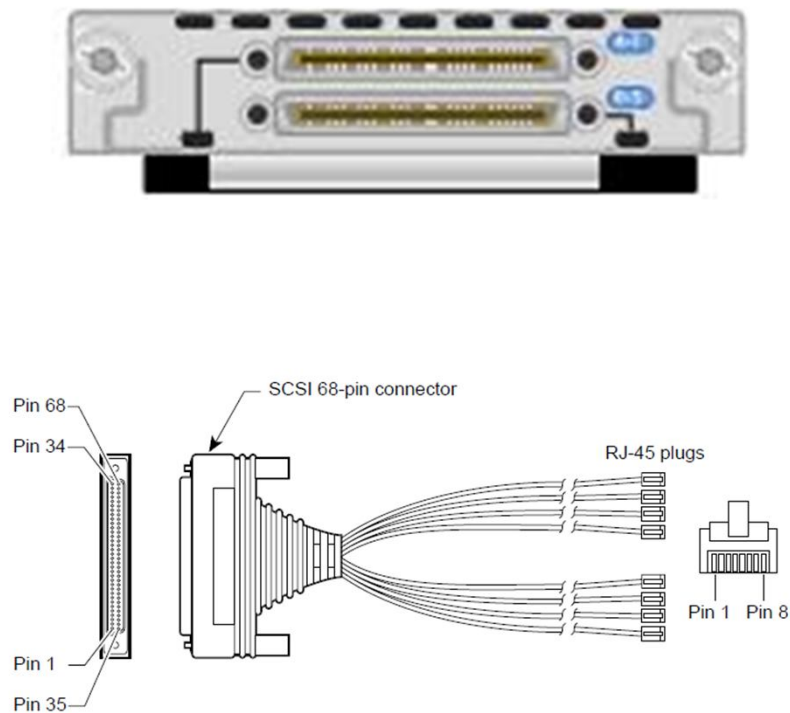
HWIC-8A - High Speed Wan Interface card with 8 RS232 async port



SM-ES3G-16-P - EtherSwitch SM L3 + PoE + 16 10/100/1000

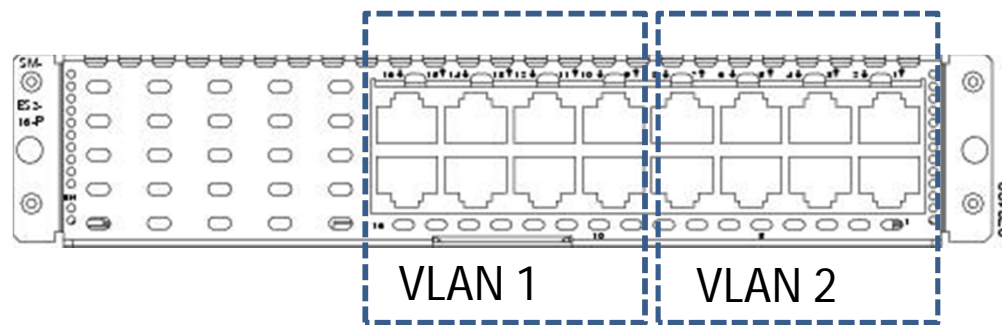
# Terminal Server

HWIC-8A - High Speed Wan Interface card with 8 RS232 async port



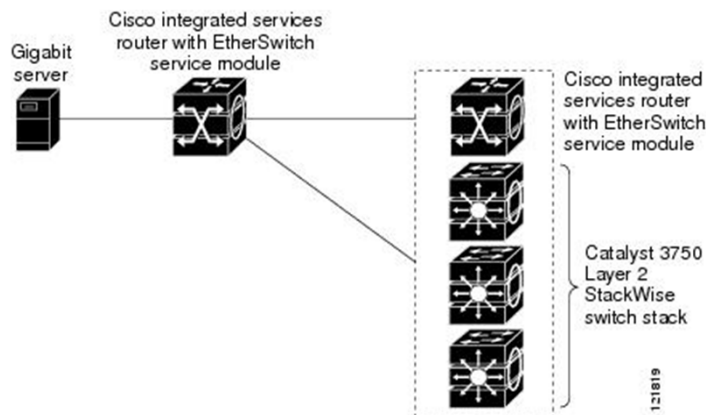
# EtherSwitch

SM-ES3G-16-P Enhanced EtherSwitch Service Module



## VLAN 1 – MGMT

Sentry PDU  
Switch  
ASR 9010  
Cisco 7600  
Servers



## VLAN 2 – WORK

ASR 9010  
Servers



# Cisco 7600 – NREN Access Node



CHASSIS



2 GE ports Route Switch  
Processor 720



7600 ES+T 20x1GE SFP

# Cisco 7600 Features

- Cisco 7606-S Chassis Features
  - Seven-RU (12.25-in.) compact chassis, up to 6 chassis per 7-foot rack
  - Two interface slots plus 2 supervisor-mounted Gigabit Ethernet ports (gigabit interface controllers [GBICs])
  - Network Equipment Building Standards (NEBS) Level 3 compliance
  - Route processor protection capability: 1 + 1
  - Power-supply protection option, AC or DC: 1 + 1
  - Single-side connection management for both interface and power terminations
  - Side-to-side airflow
- Cisco 7606-S System Features
  - Up to 240-Mpps distributed forwarding rate (requires distributed forwarding cards [DFCs])
  - Total throughput: 480 Gbps



# NREN Access Node Configuration

