

# Campus Network Best Practices: Hints on Network Diagrams

Dale Smith

Network Startup Resource Center

dsmith@nsrc.org

This document is a result of work by the Network Startup Resource Center (NSRC at <http://www.nsrc.org>). This document may be freely copied, modified, and otherwise re-used on the condition that any re-use acknowledge the NSRC as the original source.



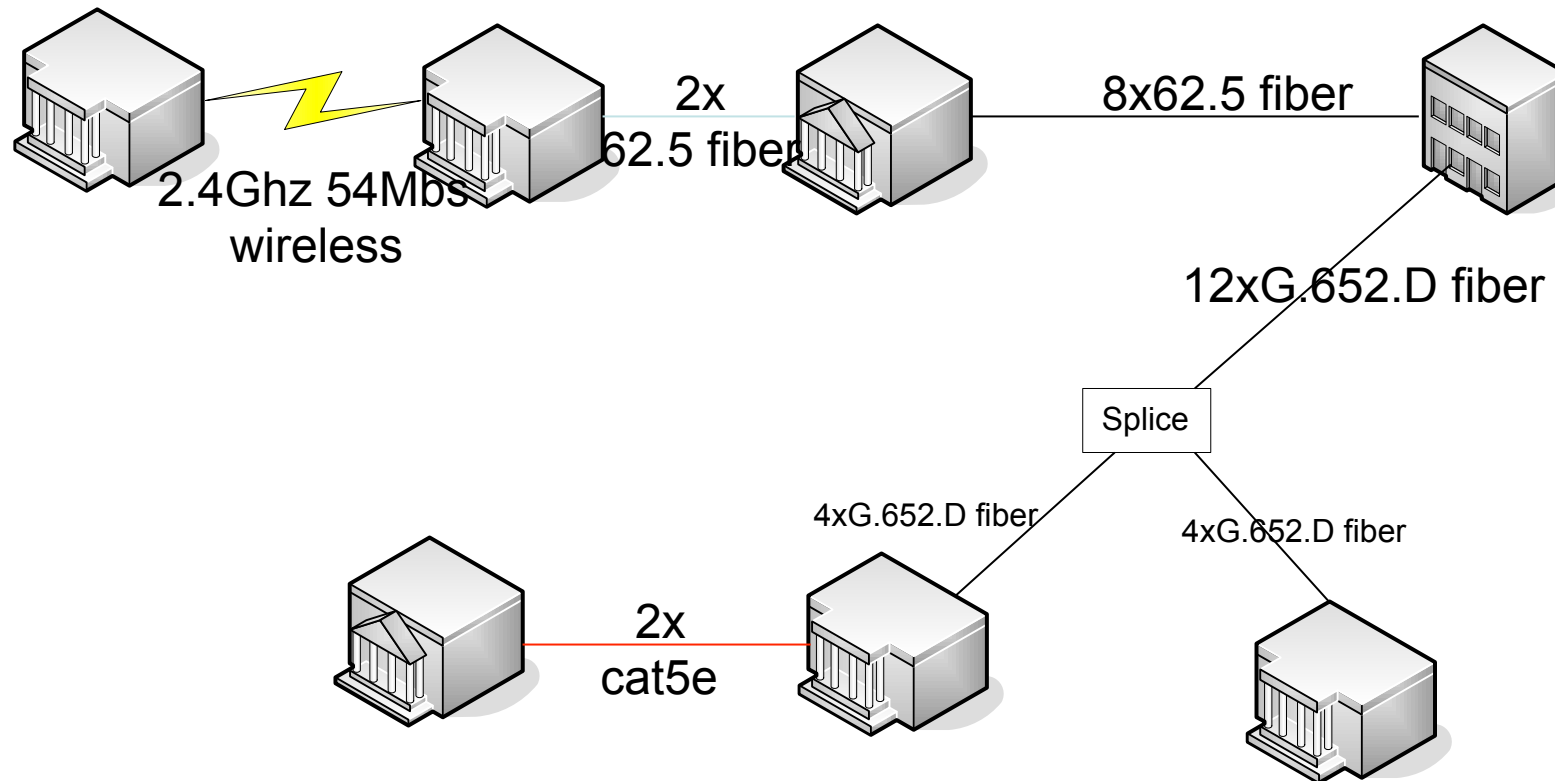
UNIVERSITY OF OREGON



# Network Diagram Hints

- Use separate diagrams for separate layers
  - Physical (cabling)
  - Switching (layer 2)
  - Routing (layer 3)
  - Frequently can combine Switching/Routing
- Helpful to have the physical diagram be an overlay on your campus map to show relations and distances between buildings
- If you combine layer 2/3, make it clear where you are switching and where you are routing

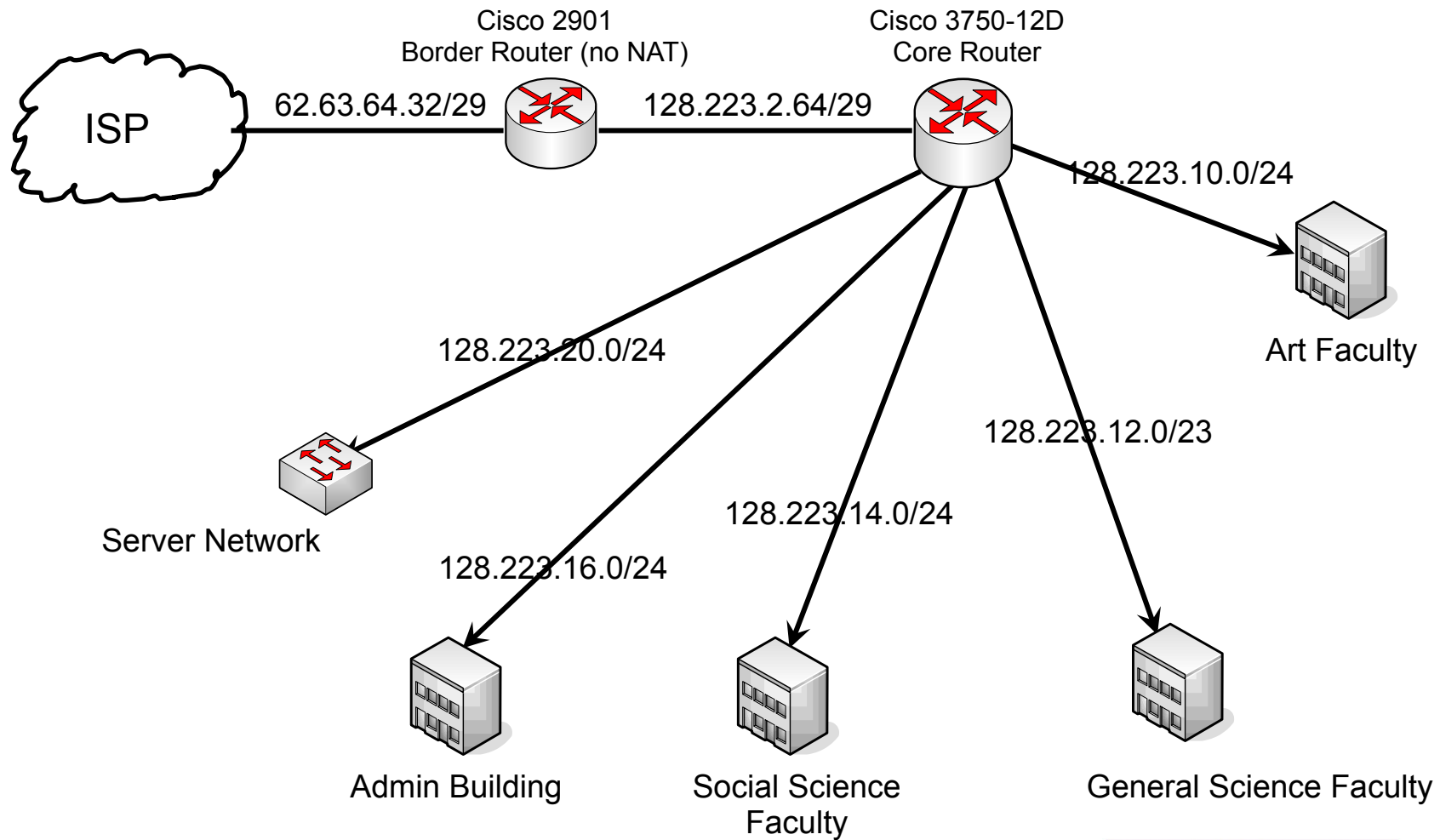
# Sample Physical Diagram



UNIVERSITY OF OREGON



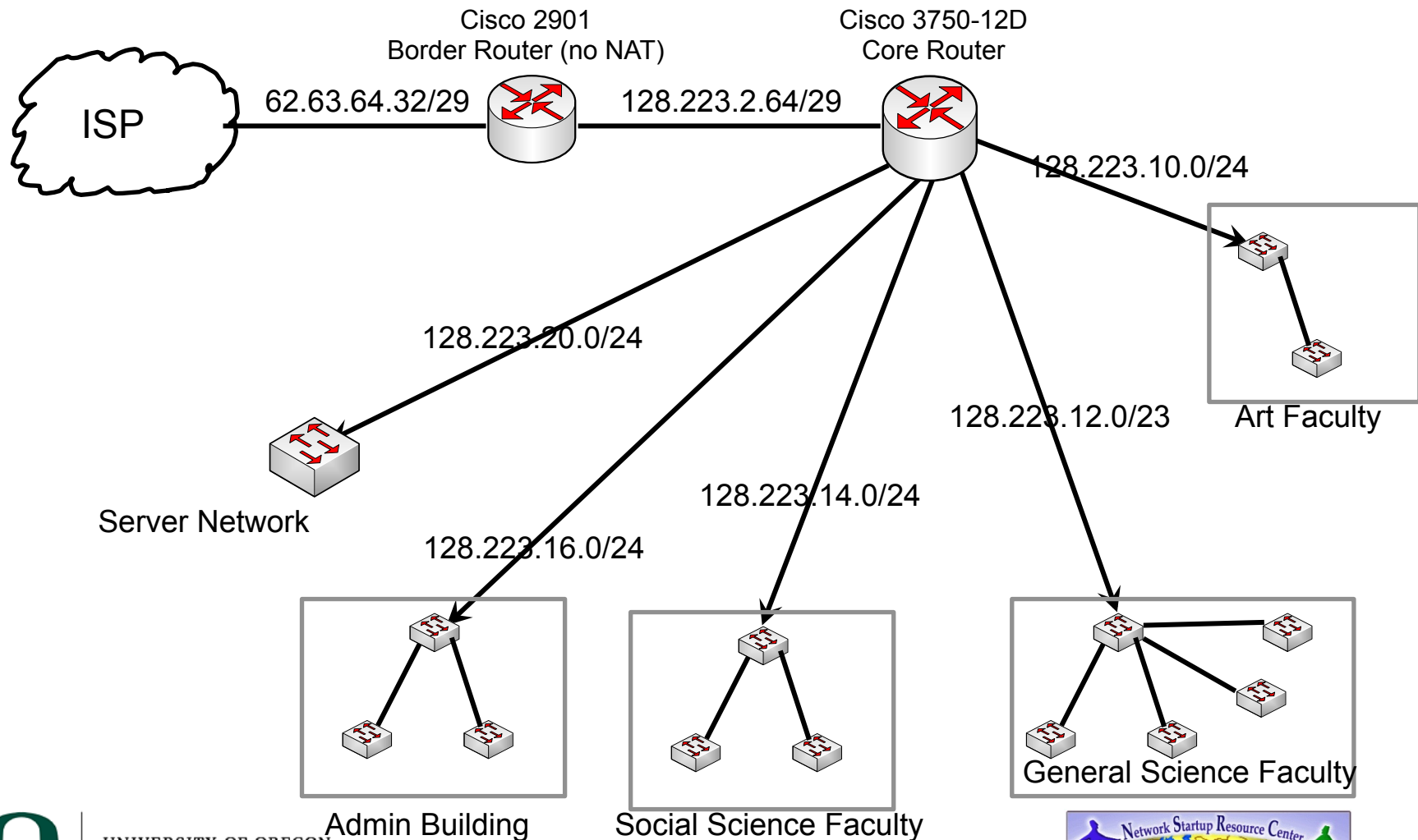
# Sample Layer 3 Diagram



UNIVERSITY OF OREGON



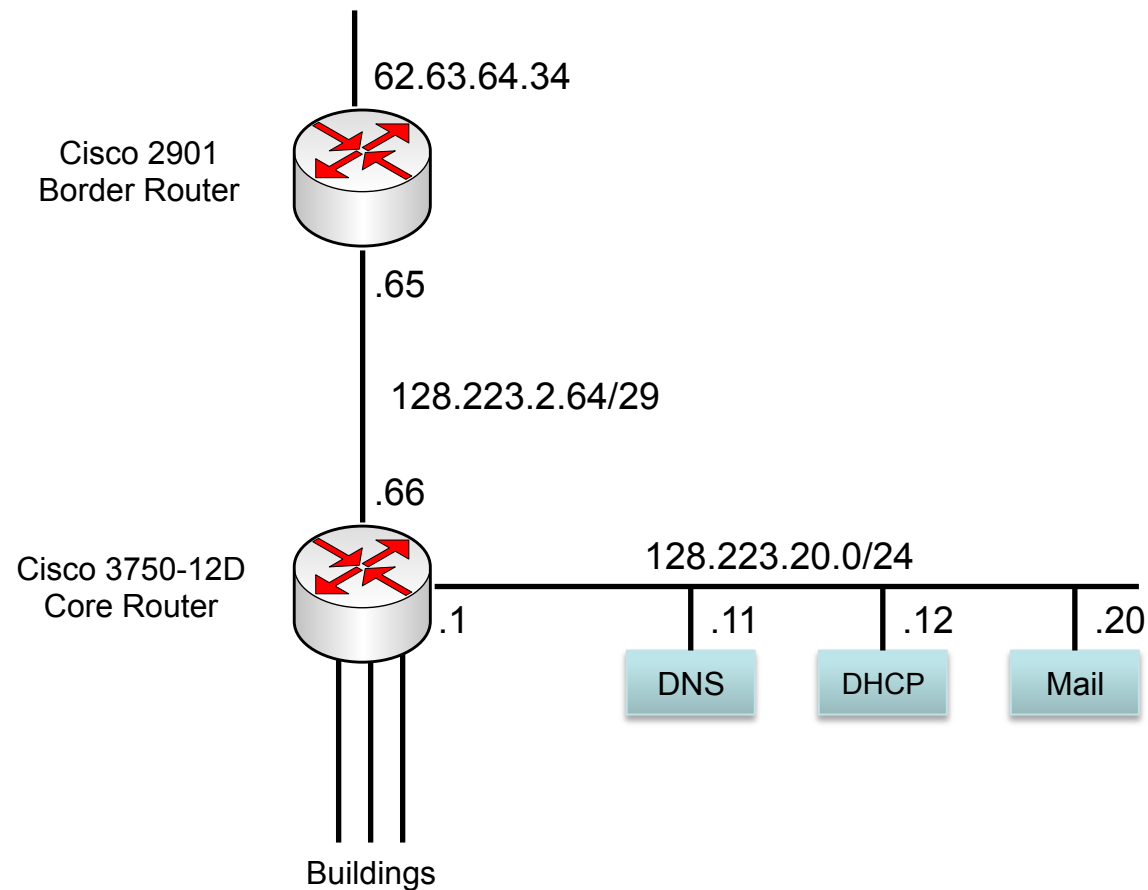
# Sample Layer 2/3 Diagram



UNIVERSITY OF OREGON



# Sample Layer 3 (Core detail)



# Questions?

This document is a result of work by the Network Startup Resource Center (NSRC at <http://www.nsrc.org>). This document may be freely copied, modified, and otherwise re-used on the condition that any re-use acknowledge the NSRC as the original source.



UNIVERSITY OF OREGON



# Symbols to use for diagrams

