

# Campus Network Security High Level Overview

Dale Smith

Network Startup Resource Center

dsmith@nsrc.org

This document is a result of work by the Network Startup Resource Center (NSRC at <http://www.nsrc.org>). This document may be freely copied, modified, and otherwise re-used on the condition that any re-use acknowledge the NSRC as the original source.



UNIVERSITY OF OREGON



# Campus Networks and Security

- Goal: Prepare for problems you **will** have
  - You will have compromises and hackers
  - You will have viruses
- You get a call from your ISP saying that they have a report that one of your hosts is participating in a Denial of Service (DoS) attack
  - What do you do?
  - How do you find the host (very hard if NAT)?

# Security is a Process

- You can never achieve security – it is a process that you have to continually work on
  - Assessment – what is at risk
  - Protection – efforts to mitigate risk
  - Detection – detect intrusions or problem
  - Response – respond to intrusion or problem
  - Do it all over again

# Security Policy Framework

- Why is policy important?
  - How do your users know what is permissible?
  - How do you know what you can do?
    - Can you disconnect users from the network?
    - Can you eavesdrop on network traffic?
- What do you include?
  - Typical policy framework for a University is an “Acceptable Use Policy” or AUP
    - Google “University Acceptable Use Policy”

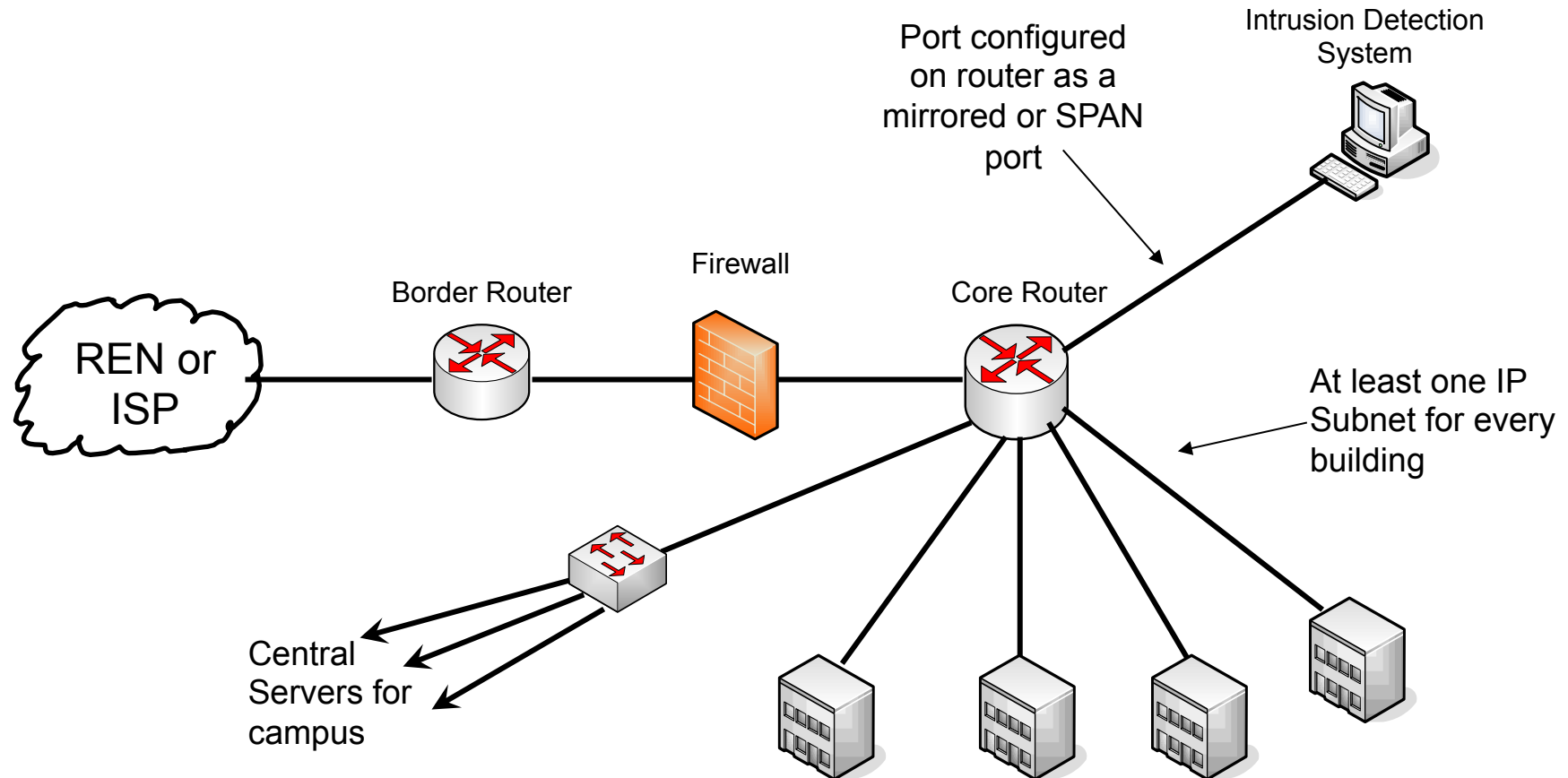
# Typical Acceptable Use Policy

- Use of University computing and network for University-related use only (prohibits commercial use)
- Shall not interfere with use of computing or network of others (prohibits hogging of resources)
- Copyright must be respected
- Violators can be denied access
- Use of computing and network is not private and can be monitored by IT Staff
- And more. Use Google and find examples
- Make this an official University Policy so that violations of AUP will be treated as violations of University policy

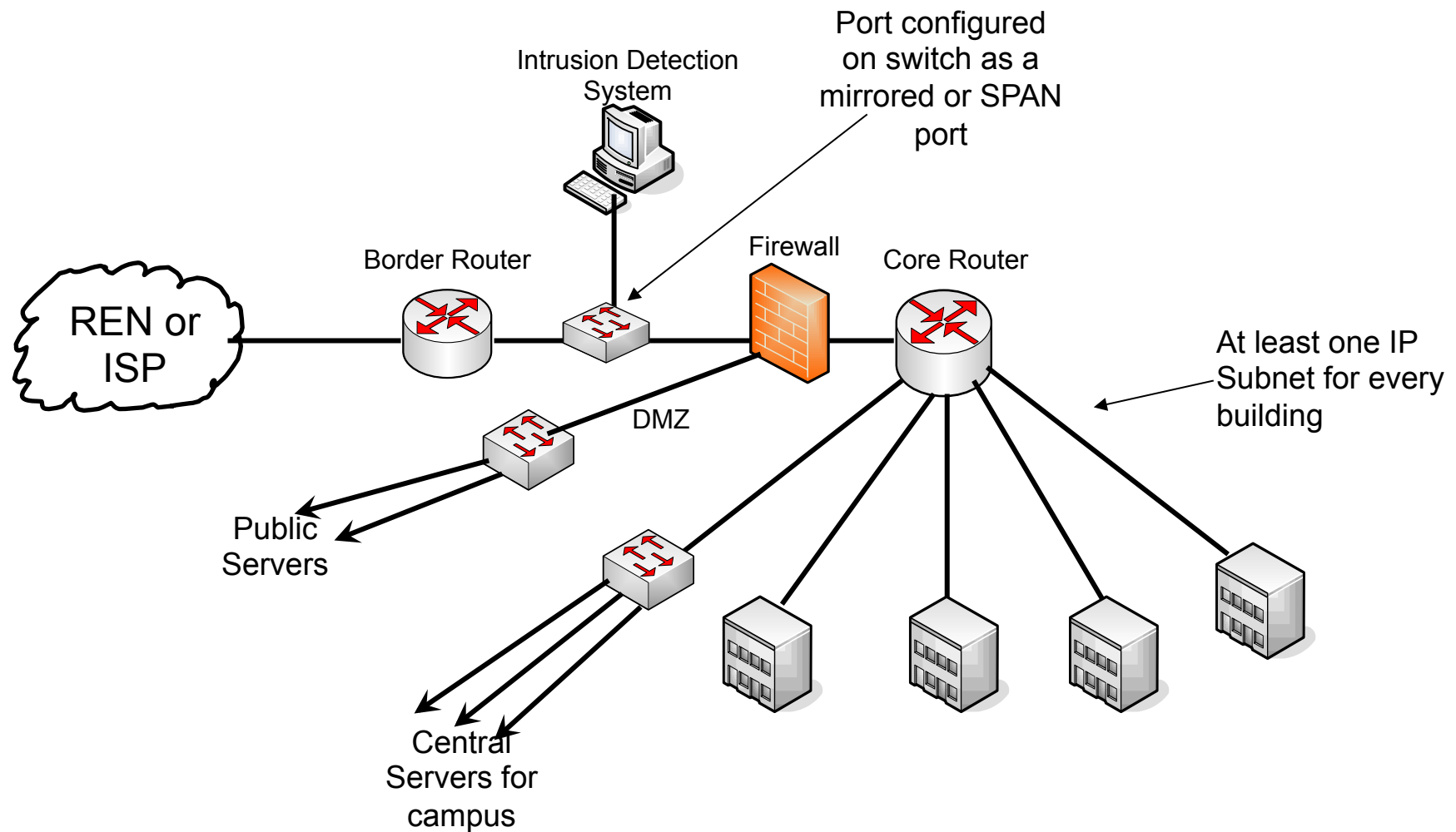
# Design with Security in Mind

- Segmentation and IP addressing schemes
  - Follow campus network best practices
  - Route in the core
  - One IP Subnet per building
  - Put campus-level servers on IP subnet that is separate from users
- Where to put firewalls and IDSs
  - Firewalls protect critical assets
  - IDS needs to see as much traffic as possible

# Typical Design

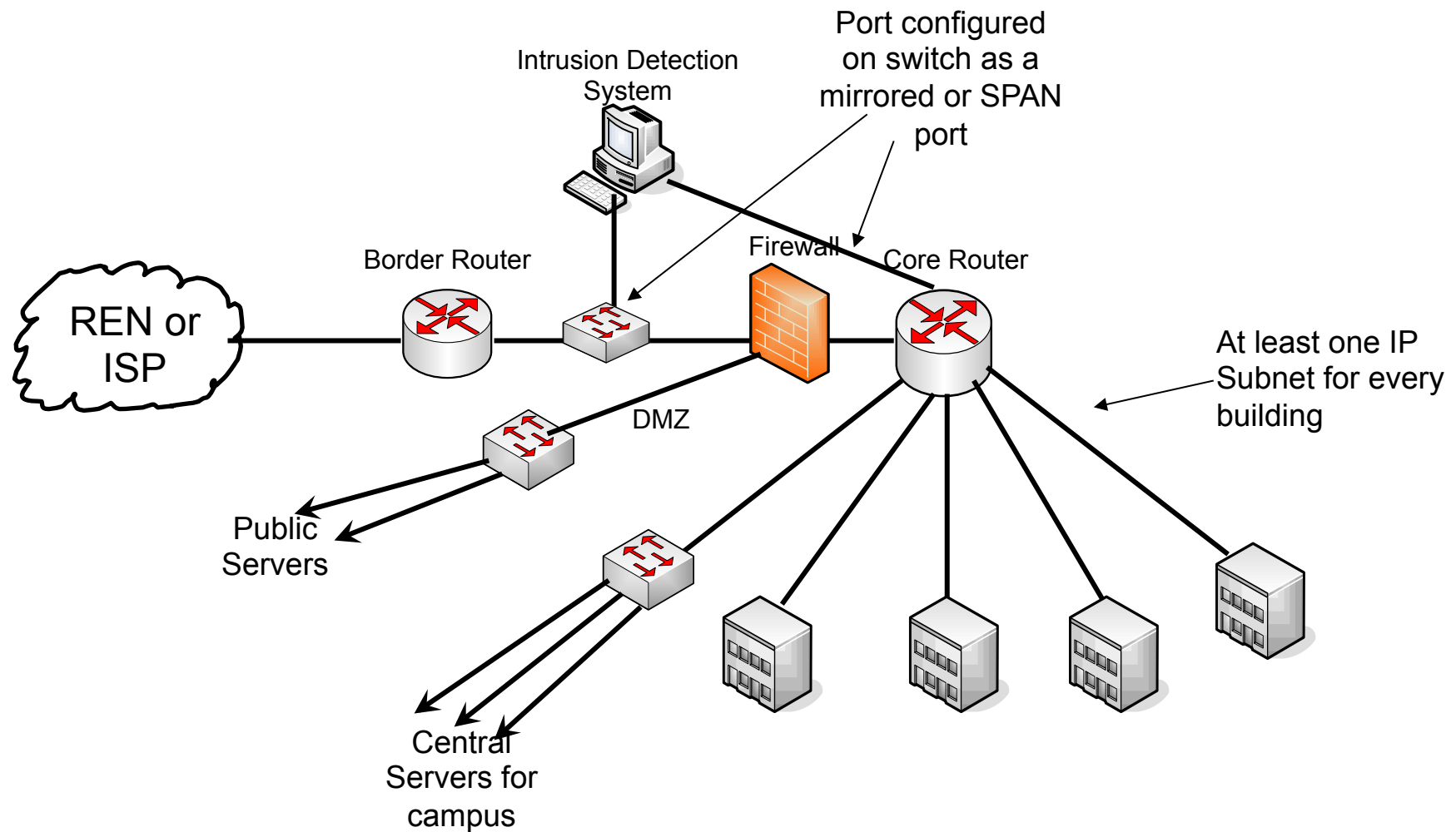


# Another Typical Design





# Another Typical Design



# Security Foundation

- You must have managed equipment in your network
- You must have some basic network management running
- Network Management is the foundation that much of the security framework operates on

# Network Traffic Analysis

- It is important to know what traverses your network
  - You learn about a new virus and find out that all infected machines connect to 128.223.60.21
  - What machines have connected?
- What tools are available?
  - netflow: you will learn about this
  - Snort: open source intrusion detection system that is very useful to find viruses



# Log Analysis

- Can be just as important as traffic analysis
- Central syslog server and gather logs from:
  - DHCP server, DNS servers, Mail servers, switches, routers, etc.
  - Now, you have data to look at
  - Given an IP, you can probably find user
- Lots of tools to correlate logs and alarm on critical events

# Centralized Authentication

- AAA: Authorization, Authentication, and Accounting
- Central database of users
  - Can be a single system that everyone has a login (or password file entry)
  - LDAP or Microsoft Active Directory
- Systems and Devices use database
  - Protocols: Radius, LDAP, Kerberos, LDAP, and Active Directory

# Encryption

- Encryption is important
  - Protect sensitive data
  - Protect passwords
- Disable clear-text password protocols
  - Disable telnet, ftp
  - Only allow TLS based POP and IMAP
  - Move all web traffic to HTTPS that involves passwords or sensitive data

# SSL Certificates

- Don't use self-signed for public services
  - They teach users bad habits
- Get certificates from well known certificate authorities (CA)
- Larger campus may want to provide certificate service

# Wireless

- Best practice is to authenticate users
  - This allows you to know who your users are
  - Requires central AAA database
  - Log the access to your central syslog server
- How to do this
  - Captive Portal
  - 802.1x WPA2 Enterprise
- Who can install access points (AUP)?



# Virus Protection

- Most viruses are spread through the action of users
  - Clicking “OK” or “Install” when they shouldn’t
  - Firewalls generally won’t help
  - Windows needs virus protection software (is MS Security Essentials enough?)
- Server-based viruses or intrusions are typically caused from external attacks

 – Firewalls might help

# Responding to Incidents

- This is not an “if”, but “when”. You will have incidents.
- Need to establish policy & procedures
- This is different from an AUP – it is an internal operating policy
  - Who do you notify?
  - Can you disconnect a system from the network?

# High Level Wrapup

- Security is hard – you are never done
  - You are always in the Assessment, Prevention, Detection, Response cycle
- Many security tools and practices builds upon your network management framework
  - Build your network management framework first and get started on all of this
- Acceptable Use Policy a high priority

# Resources

- Lots of resources on the Internet
  - [www.sans.org](http://www.sans.org) – subscribe to the SANS newsletter
  - [www.cert.org](http://www.cert.org) – a good resource for lists of vulnerabilities
  - [www.wikipedia.org](http://www.wikipedia.org) – good source of information for lots of topics
  - [www.google.com](http://www.google.com) – having a problem? Seeing an error message? Google it.



# Questions/Discussion?

This document is a result of work by the Network Startup Resource Center (NSRC at <http://www.nsrc.org>). This document may be freely copied, modified, and otherwise re-used on the condition that any re-use acknowledge the NSRC as the original source.



UNIVERSITY OF OREGON

