

# Accessing the Lab

## Virtualized Lab

Presented by Anna Saine  
AfNOG CHIX 2015, Maseru, Lesotho



These materials are licensed under the Creative Commons Attribution-NonCommercial 4.0 International license (<http://creativecommons.org/licenses/by-nc/4.0/>)



# Basics

- Ensure you are connected to the wifi AP. The SSID and password will be distributed in class.
  - **SSID: afchix**      **Password: afchix2015**
- Ensure you are using our DNS server if you want to resolve the DNS names handed out in the labs (10.10.0.241)

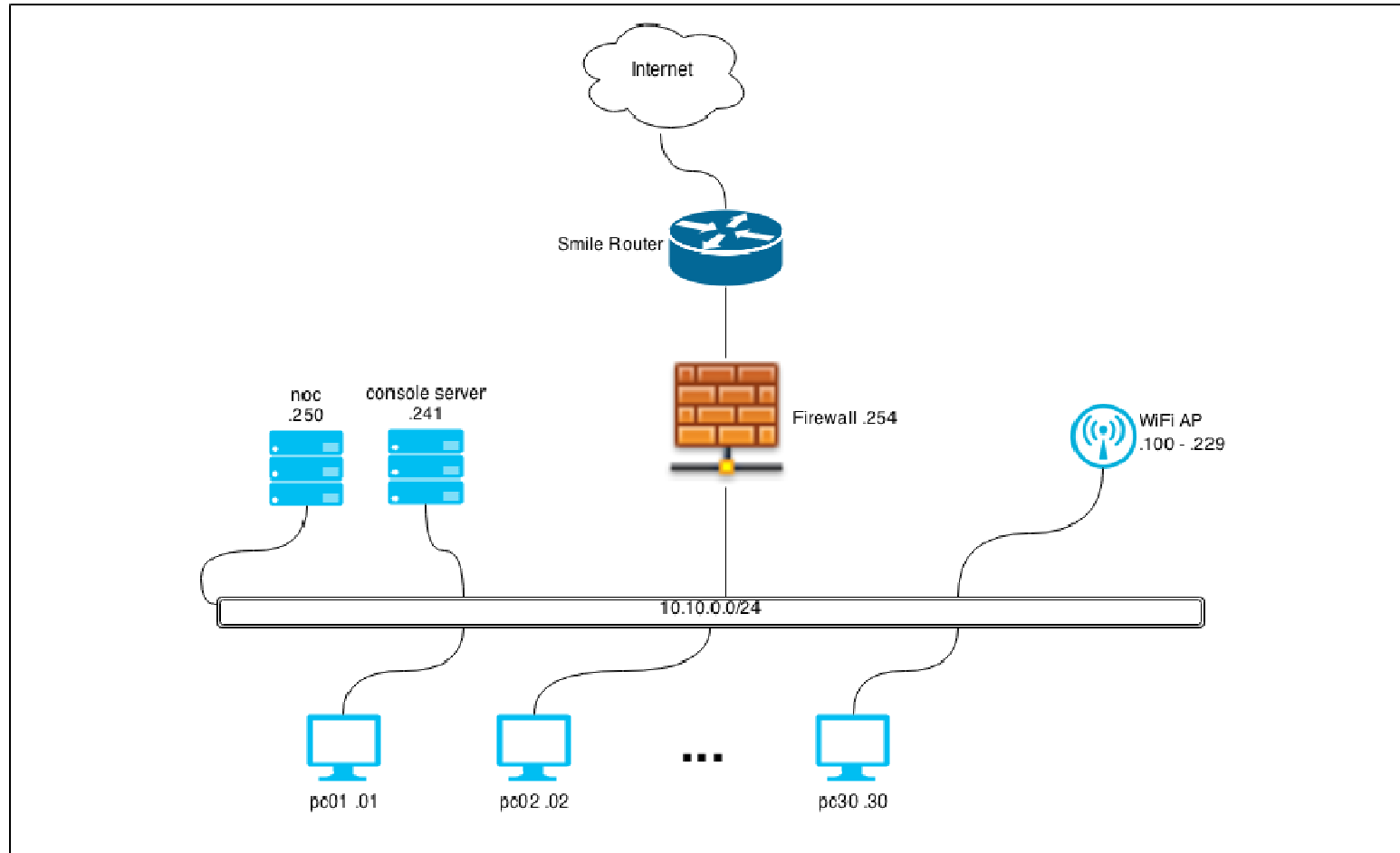


# Class Layout

- The logical network diagram follows: each of you will have a host to yourselves with the ip address 10.10.0.N ( $N = 1 - 33$ ).
- You'll each get an IP off the wifi in the range 100-229. Some other servers exist with IP addresses above that.



# Logical Network Diagram

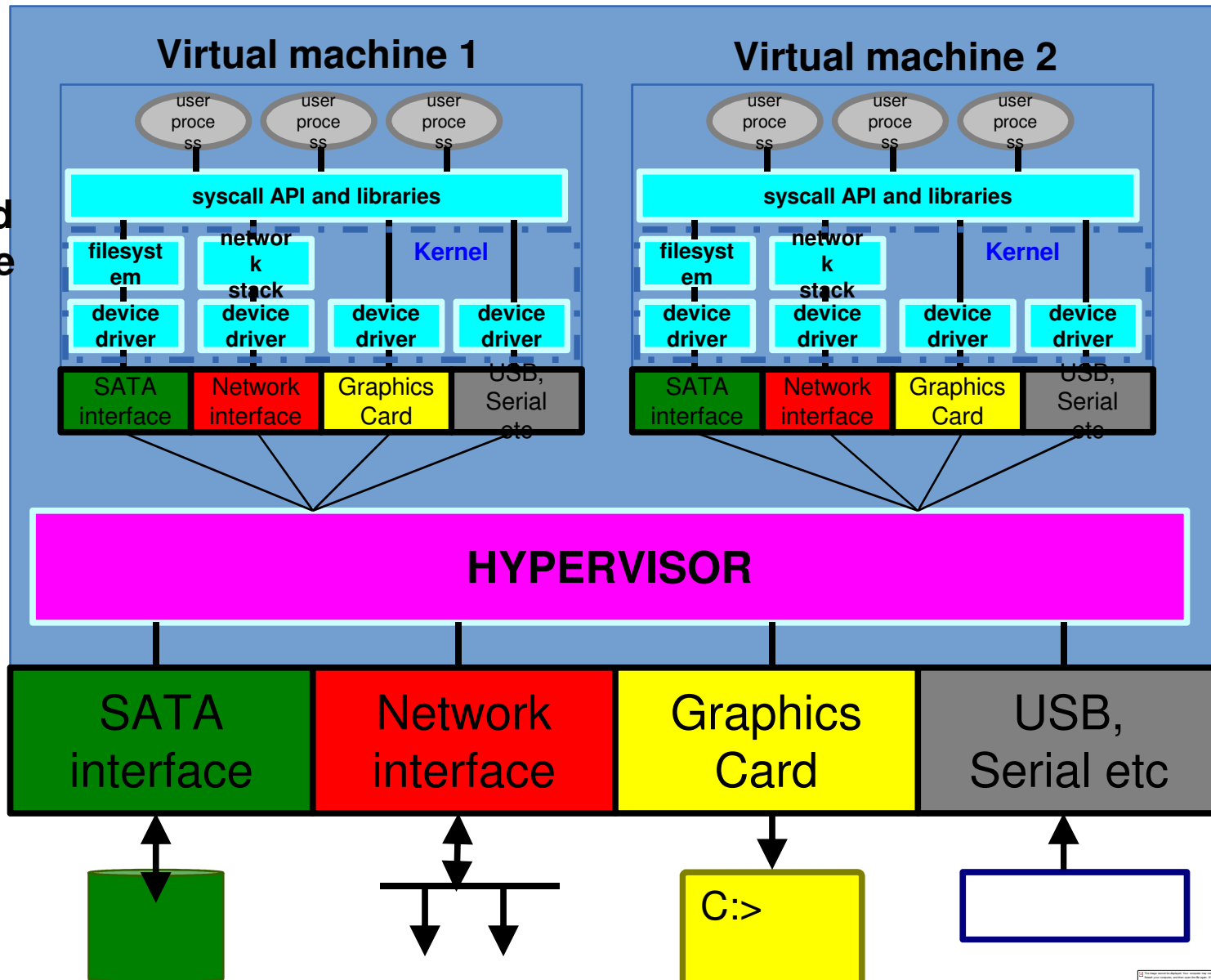


# Where are the 33 pcs?

- The computers are virtual machines using software similar to virtualbox or vmware. To access them use a VNC client.
  - For windows get tiger vnc or tight vnc from the NOC (<http://noc.chix.afnog.org/Downloads> or <http://10.10.0.250/Downloads>)
  - For linux there should be a default vnc client that comes with linux (ubuntu 14.04 ships with remmina remote desktop client)
  - For mac download chicken from the NOC (<http://10.10.0.250/Downloads>). Or use screen sharing (K from finder then type vnc://10.10.0.241:70NN)
- You can then connect to the relevant port on the console server (10.10.0.241). Port numbers are similar to your pc number (70NN) i.e 7001 – 7030
- This gives you access to the virtual keyboard and monitor that would be connected to the physical machine.



emulated  
hardware

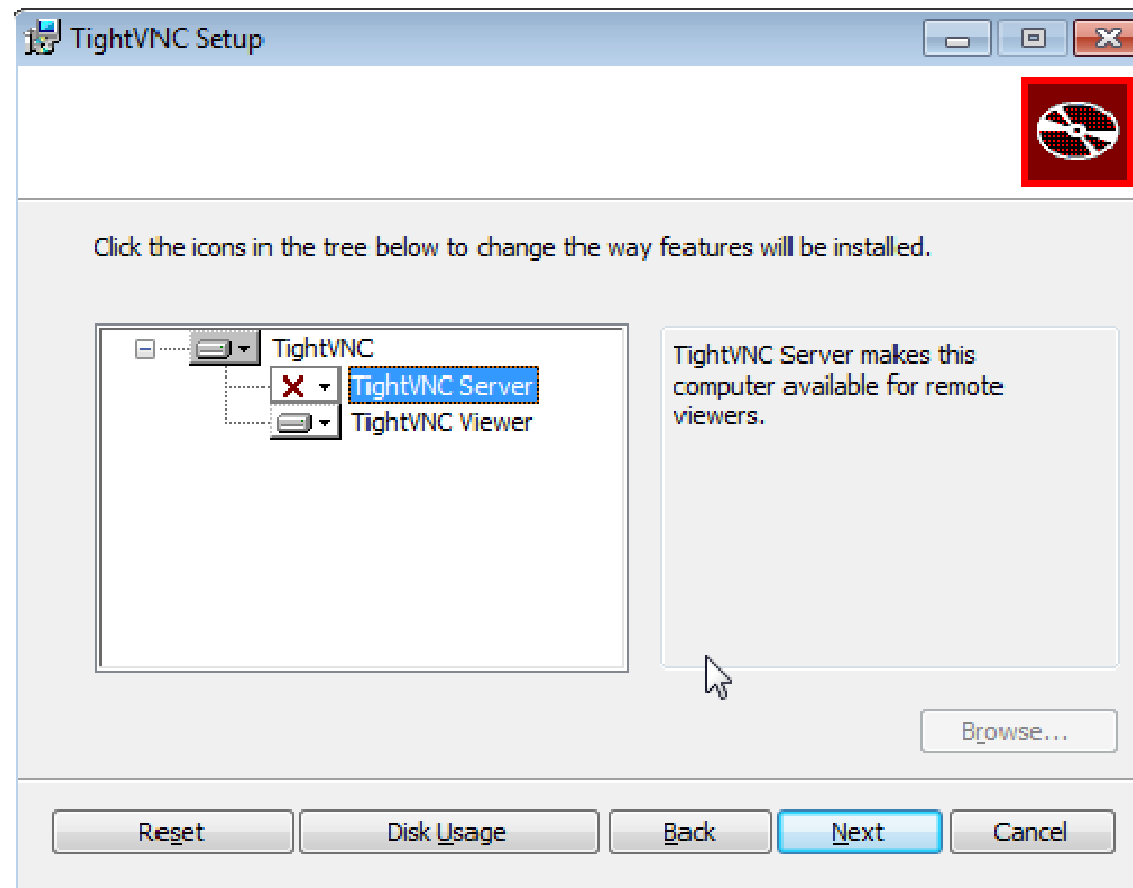


# Instructions

- If you need a VNC client Go to the NOC <http://noc.chix.afnog.org/Downloads> or <http://10.10.0.250/Downloads>
- Get a VNC client relevant to your OS (32bit or 64bit where both exist)
- If installing vnc remember to **NOT** set it as a server (don't just click next) since you do not want people to connect to your laptops keyboard/screen.

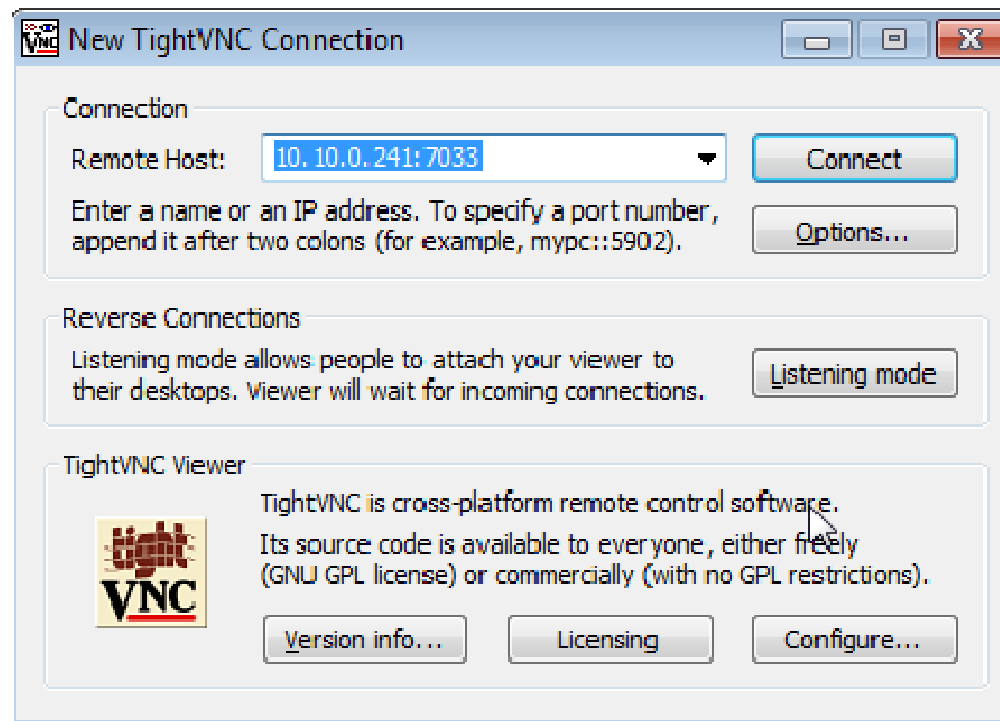


# VNC Server (Choose Custom Setup and disable TightVNC Server)





# VNC Connection To Virtual PC



# Extra instructions

- During the week you will also access your machines over the internet using SSH. Download putty from the noc if you have windows which you'll use for this.
- Linux and UNIX machines (including Mac OS) have inbuilt SSH clients. Try opening a terminal and typing `ssh --version`. If not, install `openssh-client` or similar for your OS.



# Summary

Computer	IP address	VNC Port
pc01	10.10.0.1	7001
pc02	10.10.0.2	7002
pc03	10.10.0.3	7003
...	...	...
pc10	10.10.0.10	7010
pc11	10.10.0.11	7011
...	...	...
pc20	10.10.0.20	7020
pc21	10.10.0.21	7021
...	...	...
pc30	10.10.0.30	7030

