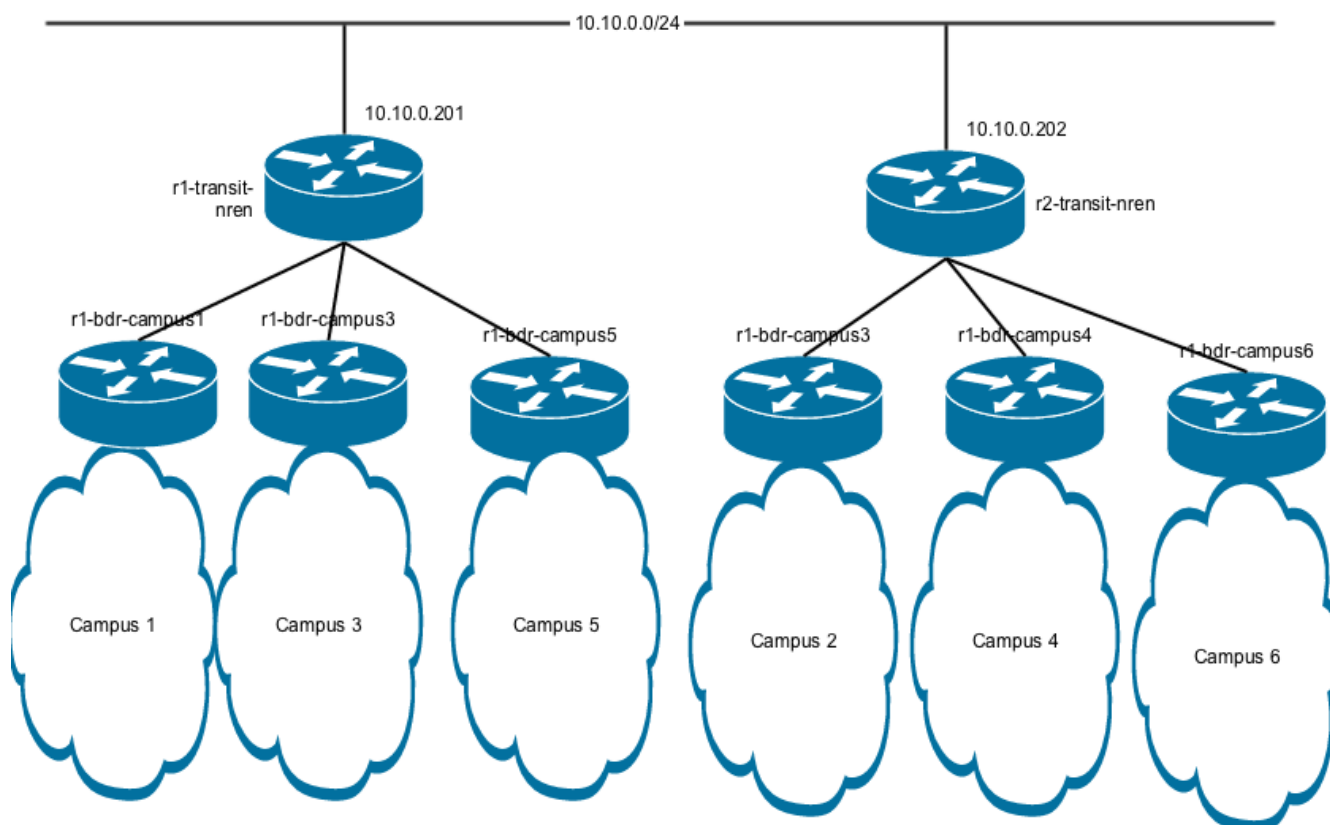


# IP Address Plan

The following diagram shows the layout of our network for the workshop. The two routers at the top are the **NREN** and these are connected to the workshop subnet.



For the lab exercises, each group has been allocated the following address space for their campus:

Campus	Public IPv4	Private IPv4	IPv6
Campus 1	100.68.1.0/24	172.21.0.0/16	2001:db8:1::/48
Campus 2	100.68.2.0/24	172.22.0.0/16	2001:db8:2::/48
Campus 3	100.68.3.0/24	172.23.0.0/16	2001:db8:3::/48
Campus 4	100.68.4.0/24	172.24.0.0/16	2001:db8:4::/48
Campus 5	100.68.5.0/24	172.25.0.0/16	2001:db8:5::/48
Campus 6	100.68.6.0/24	172.26.0.0/16	2001:db8:6::/48

You will be given details the addresses to use for routers and switches as we work through the exercises but they will be allocated from these blocks:

Network	IPv4	IPv6
Router core	100.68.X.0/28	2001:db8:X::/64
NAT Pool	100.68.X.32/28	
Servers	100.68.X.128/28	2001:db8:X:1::/64

Loopbacks	100.68.X.240/28	2001:db8:X:2::/64
Building 1 Management	172.2X.0.0/28	2001:db8:X:3::1/64
Building 2 Management	172.2X.0.16/28	2001:db8:X:4::1/64
Building 1 Data	172.2X.51.0/24	2001:db8:X:51::/64
Building 2 Data	172.2X.52.0/24	2001:db8:X:52::/64
Building 1 VOIP	172.2X.61.0/24	2001:db8:X:61::/64
Building 2 VOIP	172.2X.62.0/24	2001:db8:X:62::/64

You will need to replace '**X**' with the number of your campus group!

The following address ranges have been assigned by the NREN for the links to the Border routers:

Campus	NREN Subnet	NREN Interface	Campus Interface
Campus 1	100.68.0.0/30	100.68.0.1	100.68.0.2
Campus 2	100.68.0.4/30	100.68.0.5	100.68.0.6
Campus 3	100.68.0.8/30	100.68.0.9	100.68.0.10
Campus 4	100.68.0.12/30	100.68.0.13	100.68.0.14
Campus 5	100.68.0.16/30	100.68.0.17	100.68.0.18
Campus 6	100.68.0.20/30	100.68.0.21	100.68.0.22

From:

<https://wiki.lpnz.org/> - **Workshops**

Permanent link:

<https://wiki.lpnz.org/doku.php?id=2015:drukren-nsrc:addressplan>

Last update: **2015/09/09 06:51**

