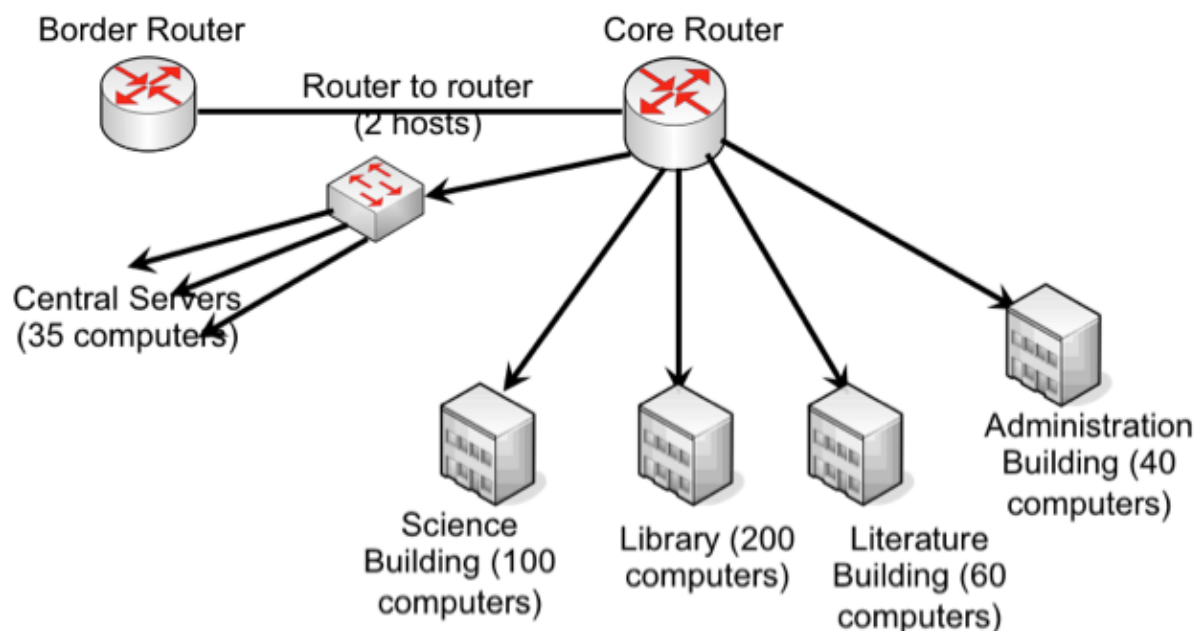


IP Addressing Exercise

Consider the following simple network (very similar to example in talk):



Fill out the CIDR size and number of addresses for each network in the following table and compute the total number of IP addresses and CIDR size required to support this small network.

Network	# Hosts	CIDR Size	Addresses
Router to router connect	2		
Server Network	35		
Science Building	100		
Library	200		
Literature Building	60		
Administration Building	40		
Wireless Network	200		
Total Hosts Needed			
CIDR Block Required			

From:

<https://wiki.lpnz.org/> - Workshops

Permanent link:

<https://wiki.lpnz.org/doku.php?id=2015:drukren-nsr:ip-addressing>

Last update: **2015/08/26 00:45**

