

Introduction to BKNIX



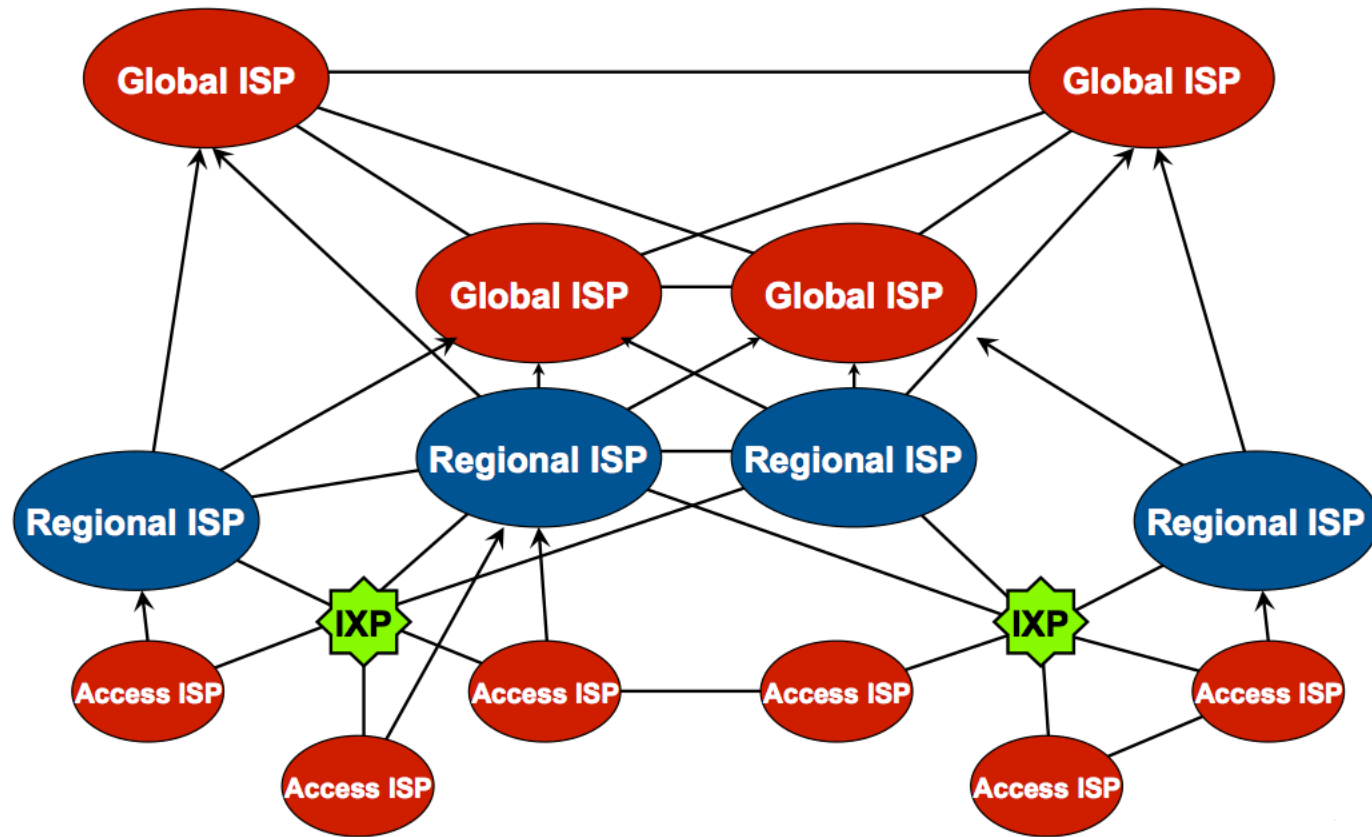
Kittinan Sriprasert
Network Engineer
BKNIX Co., Ltd.

Agenda

- ▶ Internet eXchange Point : IXP
- ▶ Development of IXP in Thailand
- ▶ Bangkok Neutral Internet eXchange (BKNIX)
- ▶ Main Infrastructure
- ▶ Services

Internet eXchange Point: IXP

Why exchange traffic ?

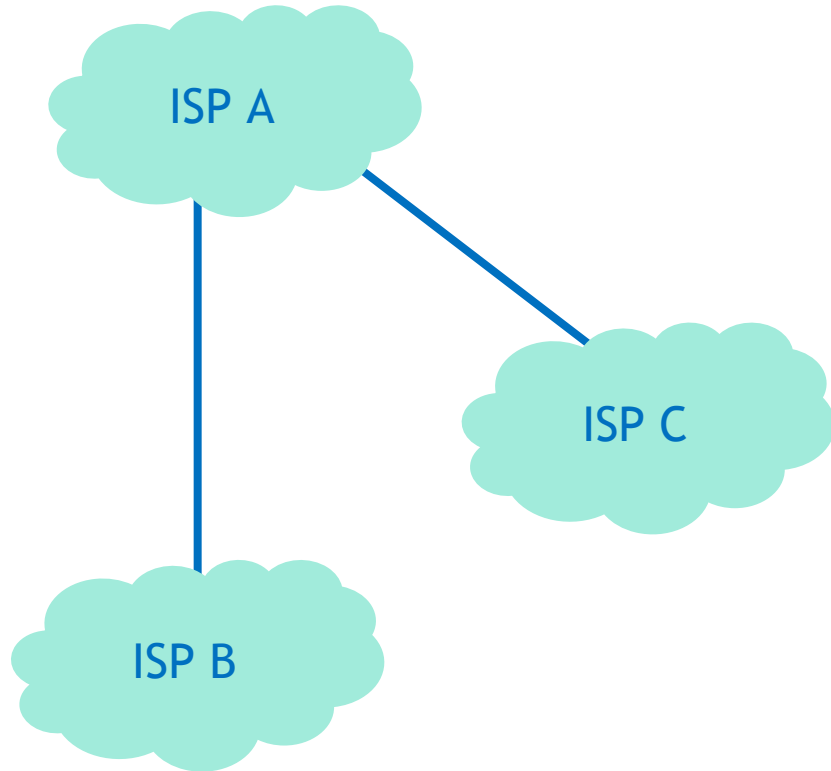


- ▶ One provider will never have all customers.
- ▶ A provider with a limited network will need to exchange traffic with a provider with a larger or different.

Peering vs. Transit

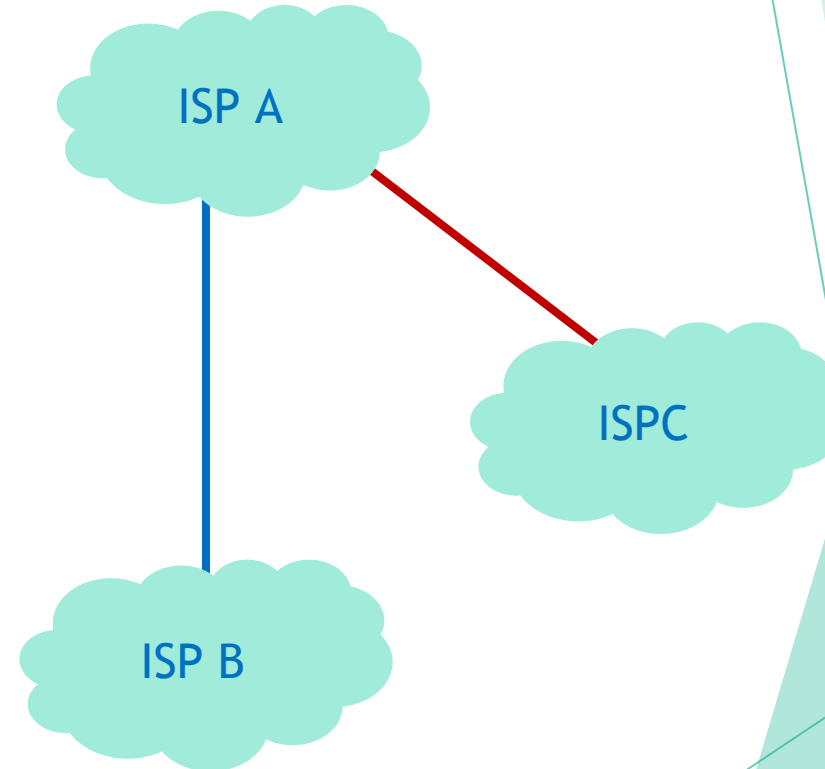
- ▶ Peering is exchange of traffic in both directions for free i.e. no money is exchanged.
- ▶ Transit is exchange of traffic in both directions for a fee, i.e commercial service that costs money charge for transit services.

Peering



ISP A and it's customers can reach ISP B and ISP C
ISP B and it's customers can reach ISP A
ISP C and it's customers can reach ISP A


Transit



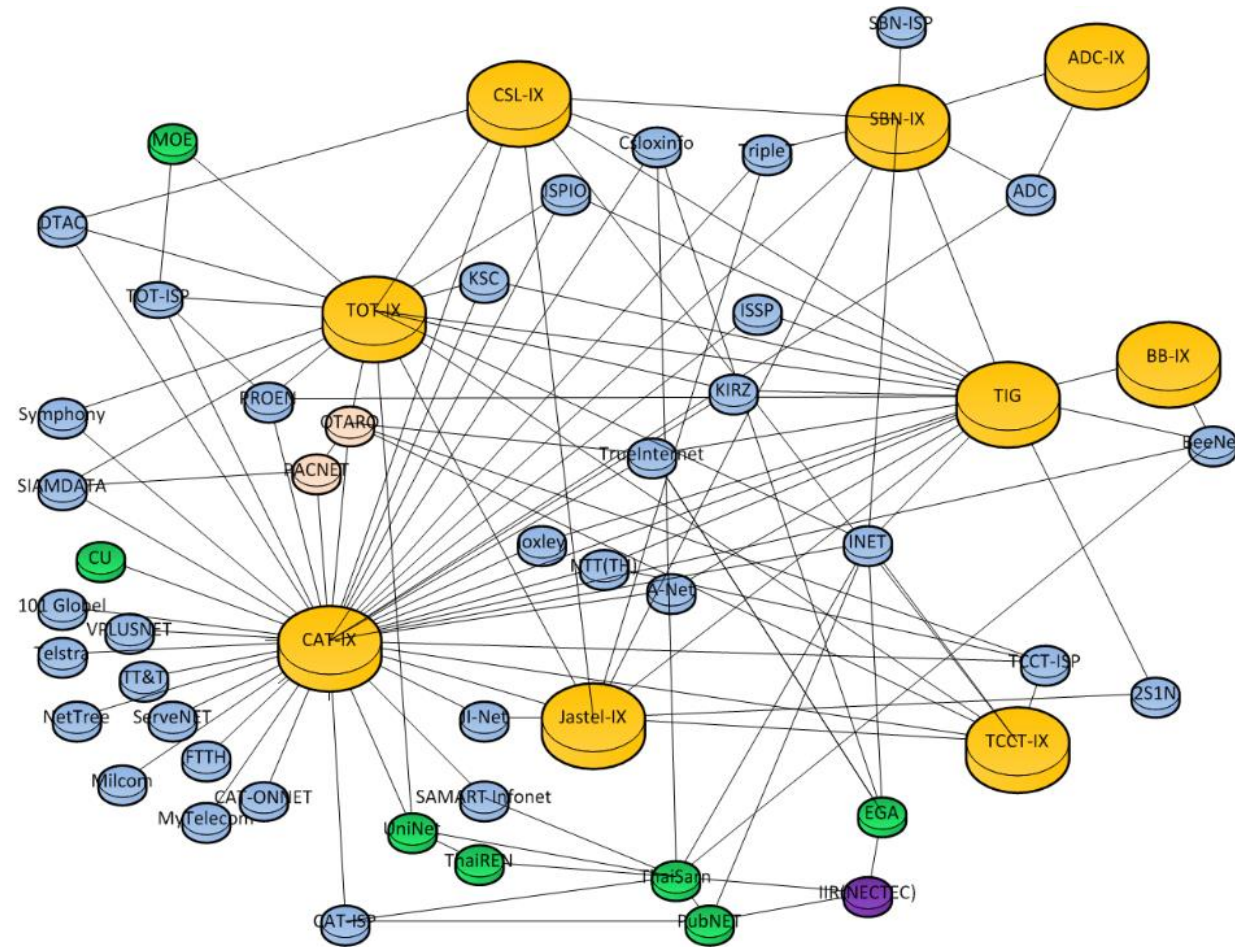
ISP A and it's customers can reach ISP B and ISP C
ISP B and it's customers can reach ISP A and ISP C
ISP C and it's customers can reach ISP A and ISP B

Development of IXP in Thailand

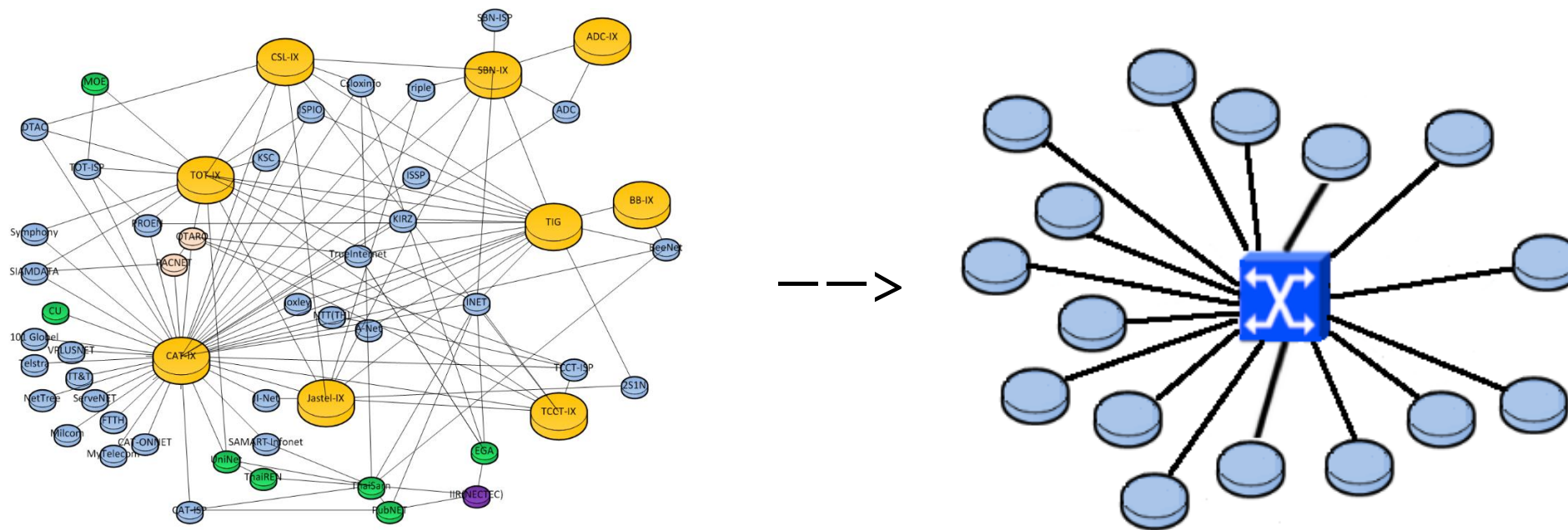
Development of IXP in Thailand

- ▶ Layer 3 IXP-transit
 - ▶ PIE/IIR (NECTEC)
 - ▶ THNIX (CAT) : then NBTC responsible to published a license for an organization that operate IXP
 - ▶ 9 Commercial IXPs : Transit
- ▶ Layer 2
 - ▶ The logo for bknix, featuring the text 'bknix' in a dark blue, sans-serif font, followed by a large, stylized 'X' composed of two overlapping chevron-like shapes, one green and one red.
 - ▶ Officially open in Feb 2015
 - ▶ VDO Presentation : <http://bit.ly/ixp-bknix>

BIG picture IXP in Thailand



Development of IXP in Thailand



Mesh → Star

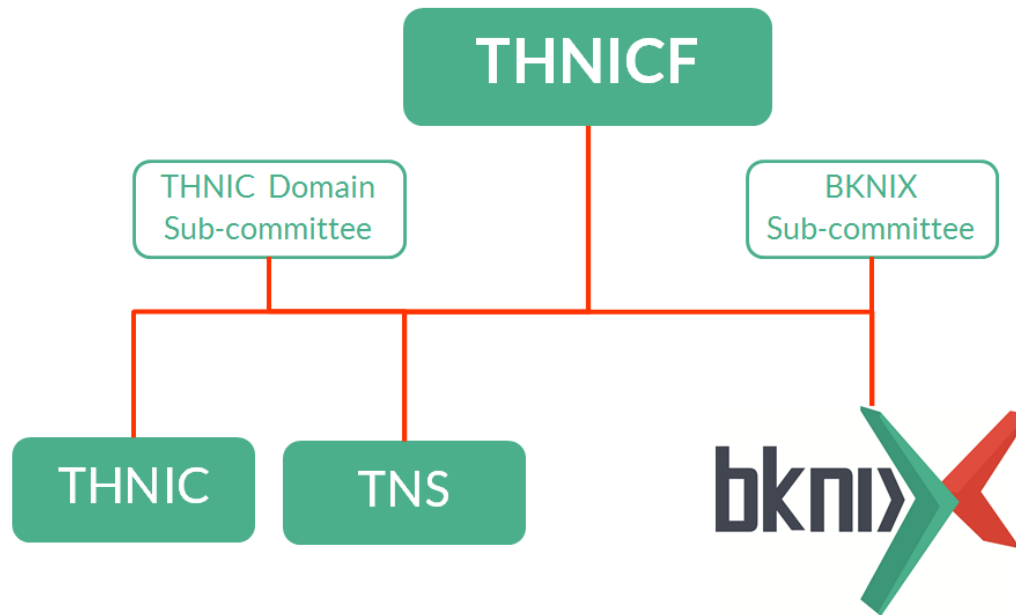
Layer 3 → Layer 2

BangKok Neutral Internet eXchange



“BKNIX” ?

- ▶ BKNIX (Bangkok Neutral Internet Exchange)
- ▶ Non-profit, neutral and independent Internet Exchange
- ▶ Based in Bangkok, Thailand



Overview

Uninet
AS4621

Member

AS63529 For Route Server
Peering AS

- Open
- High Performance
- Redundancy
- rs0 (Cisco)
- rs1 (Bird)

BBConnect
AS45796

Member

BKNIX
AS63528

For Value added services

- NTP, RPKI
- DNS
- .th (Thailand TLD)
- i-root-server anycast (coming soon)

Main Infrastructure

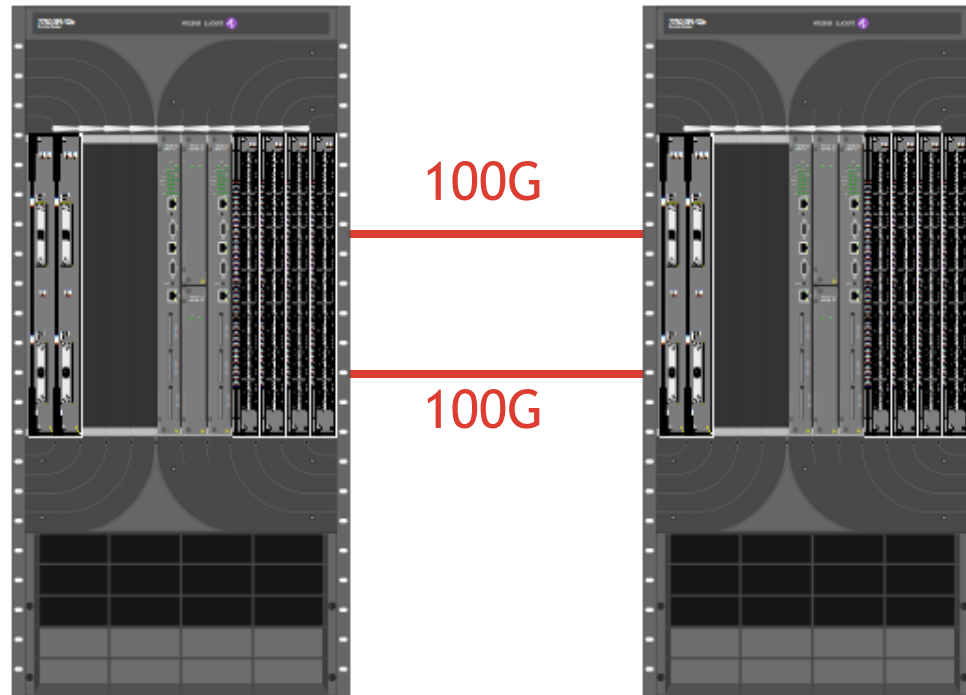
Main Infrastructure

Port Available

- ▶ Up to 160 Ports for 1 GE
- ▶ Up to 80 Ports for 10 GE
- ▶ Up to 4 Ports for 100 GE

Features

- ▶ High-Availability
- ▶ High Performance, Low Latency
- ▶ VPLS
- ▶ Port-security, QoS



7750 SR-12e

7750 SR-12e



Alcatel-Lucent



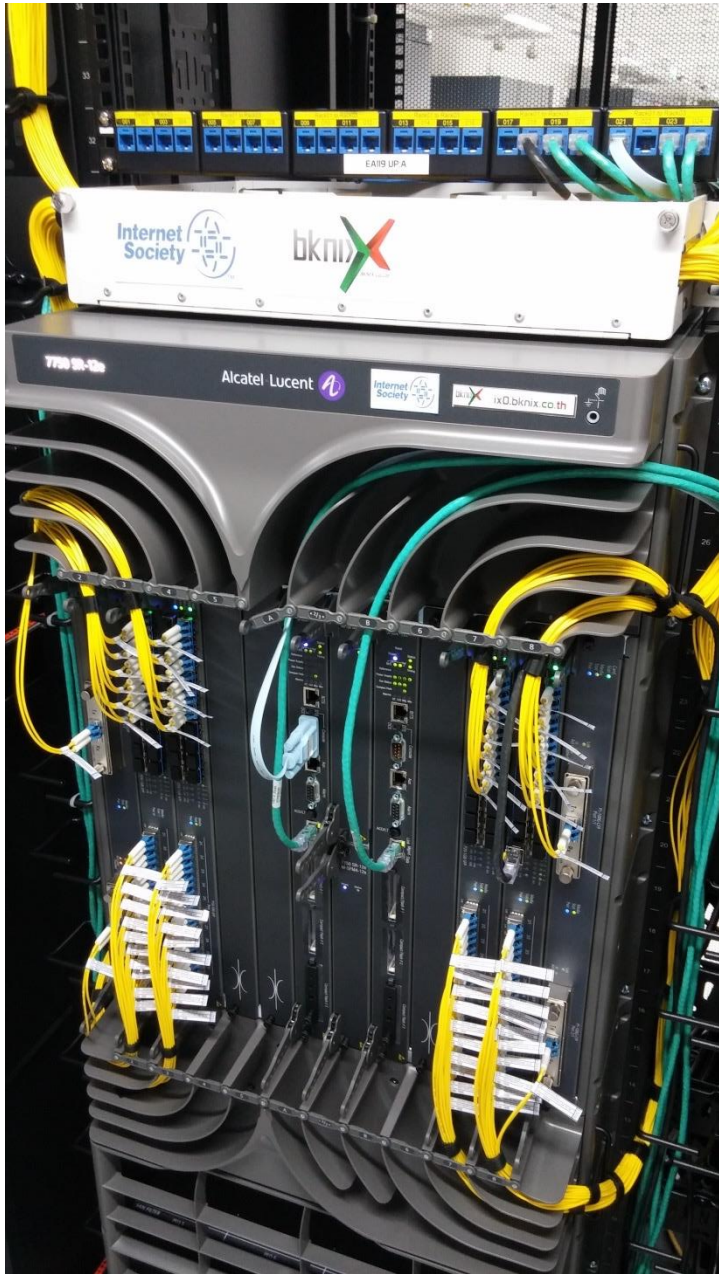
Services

Services

- ▶ 1 Gbit/s “GE” (1000BaseLX/LH, 1000BaseZX*)
- ▶ 10 Gbit/s “10GE” (10GE-LR, 10GE-ER*, 10GE-ZR*)
- ▶ 100Gbit/s "100GE" (100GE-LR4)
- ▶ Link aggregation of the above
- ▶ IPv4 and/or IPv6 (native)
- ▶ Route Servers, we have both Bird (IP Routing Daemons on UNIX systems) and Cisco Router that support both 2-byte & 4-byte AS number.
- ▶ Private account to Manage your connections, initiate peering agreement, Traffic monitoring etc. (IXP-Manager)
- ▶ NTP (Network Time Protocol)
- ▶ RPKI (Resource Public Key Infrastructure)

*for this option, required negotiation before connection.





Powered by

Powered by (1)



Powered by (2)



AIT
Asian Institute of Technology

(::) APNIC

NECTEC
a member of NSTDA



กสทช.

สำนักงานคณะกรรมการกิจการกระจายเสียง
กิจการโทรทัศน์และกิจการโทรคมนาคมแห่งชาติ

More information

- ▶ www.bknix.co.th
- ▶ Wiki Stuff
- ▶ <https://www.bknix.co.th/trac/wiki>
- ▶ Intro VDO
- ▶ <http://bit.ly/ixp-bknix>

Question ?

