

# Campus Network Best Practices: Core and Edge Networks

Dale Smith  
Network Startup Resource Center  
dsmith@nsrc.org

This document is a result of work by the Network Startup Resource Center (NSRC at <http://www.nsrc.org>). This document may be freely copied, modified, and otherwise re-used on the condition that any re-use acknowledge the NSRC as the original source.



UNIVERSITY OF OREGON



# Campus Network Challenges

- Many are not structured properly and can't effectively utilize high bandwidth connections
- Many make heavy use of NAT and firewalls that limit performance
- Many are built with unmanaged network equipment that provide no ability for monitoring or tuning the network

# How to Best Support R & E

- Research and Education needs flexible and open networks
- Things to consider
  - NAT makes some things hard (H.323 video conferencing)
  - Filtering makes it hard for researchers, teachers, and students to do interesting things
  - Your campus network must not be the bottleneck
- Make a plan for improvement – without a plan, how will you get there.



UNIVERSITY OF OREGON



# Campus Network Rules

- Minimize number of network devices in any path
- Use standard solutions for common situations
- Build Separate Core and Edge Networks
- Provide services near the core
- Separate border routers from core
- Provide opportunities to firewall and shape network traffic



UNIVERSITY OF OREGON





# Core versus Edge

- Core network is the “core” of your network
  - Needs to have reliable power and air conditioning
  - May have multiple cores
  - Always route in the core
- Edge is toward the edges of your network
  - Provide service inside of individual buildings to individual computers
  - Always switch at the edge

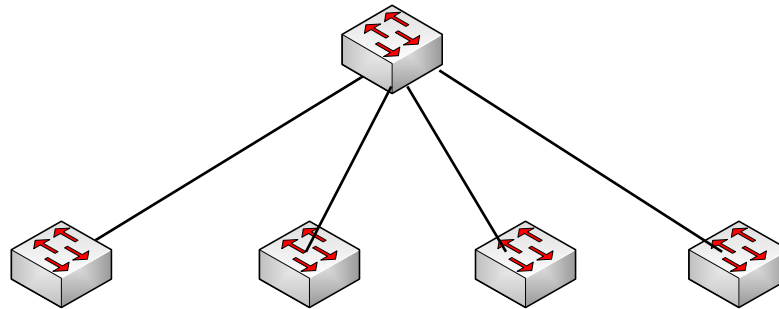


UNIVERSITY OF OREGON

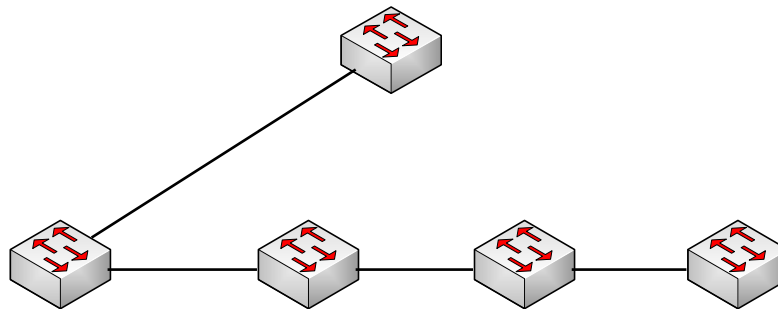


# Minimize Number of Network Devices in the Path

- Build star networks



- Not daisy chained networks



UNIVERSITY OF OREGON

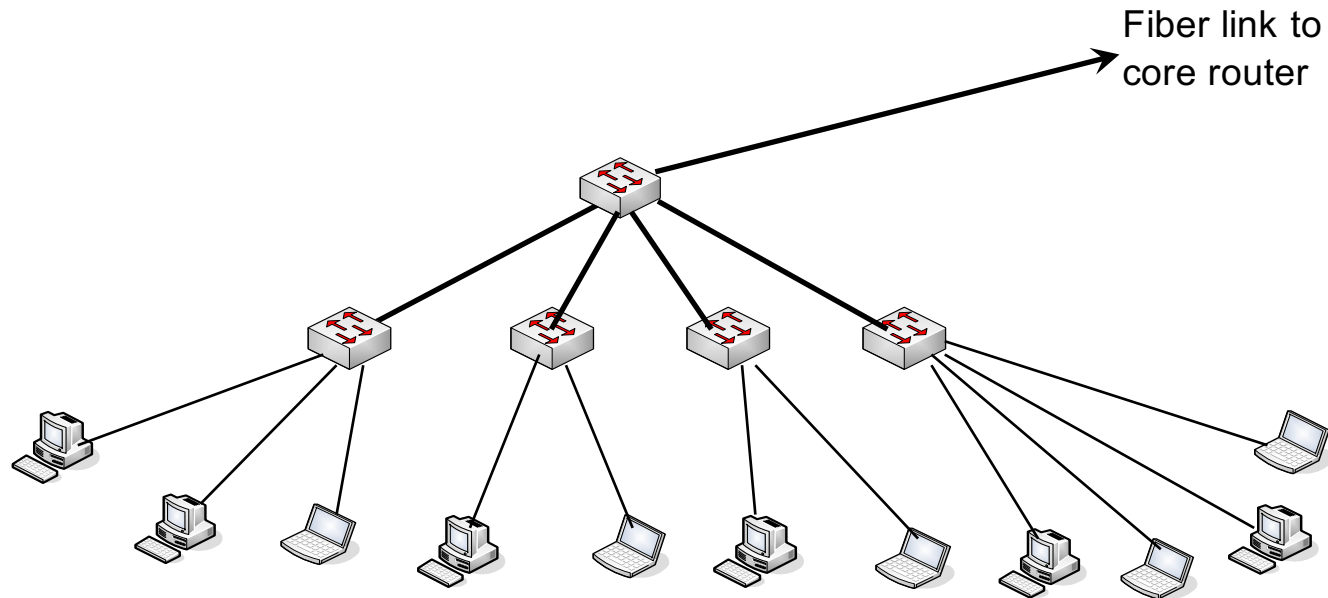
# Edge Networks (Layer 2 LANs)

- Provides Service to end users
- Each of these networks will be an IP subnet
- Plan for no more than 250 Computers at maximum
- Should be one of these for every reasonable sized building
- This network should only be switched
- Always buy switches that are managed – no unmanaged switches!



# Edge Networks

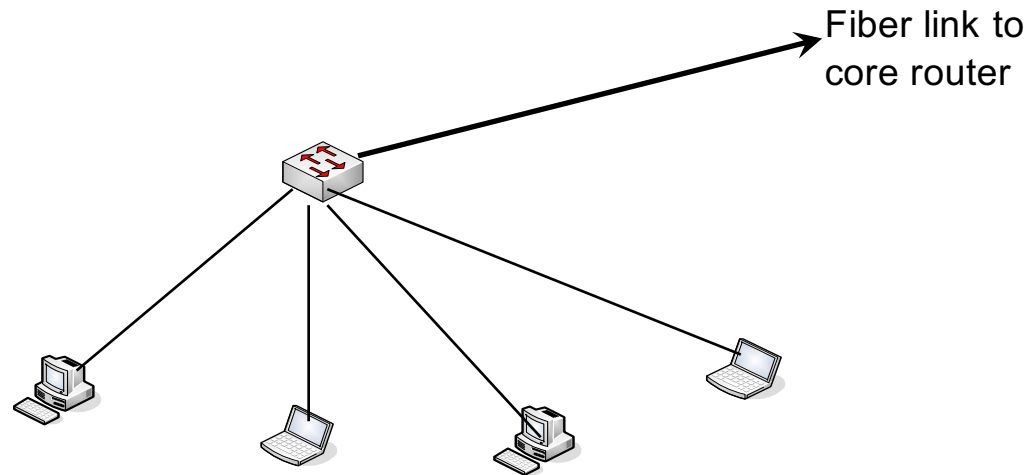
- Make every network look like this:



UNIVERSITY OF OREGON

# Edge Networks Continued

- Build Edge network incrementally as you have demand and money
- Start Small:

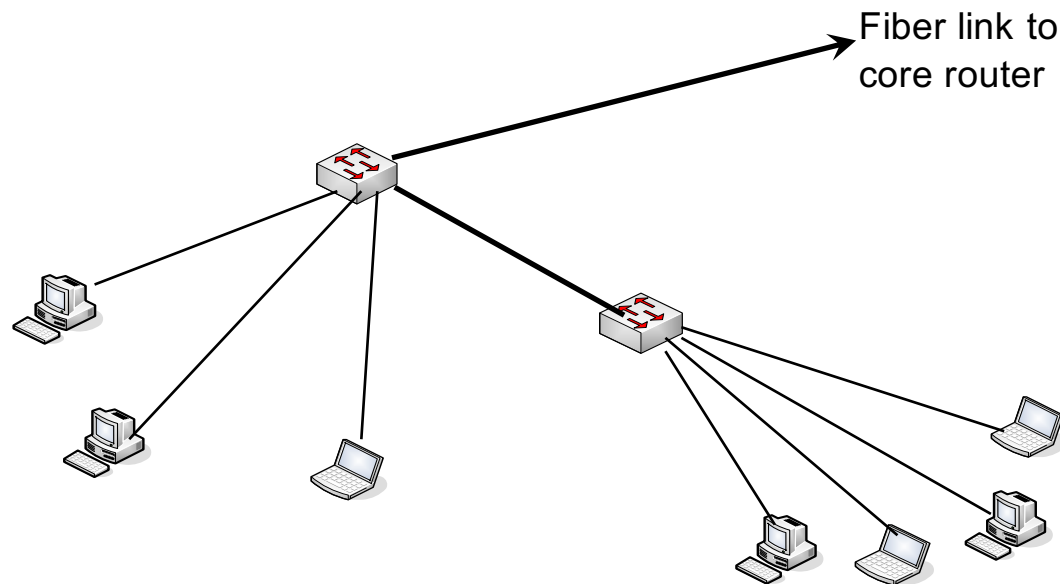


UNIVERSITY OF OREGON



# Edge Networks Continued

- Then as you need to add machines to the network, add a switch to get this:

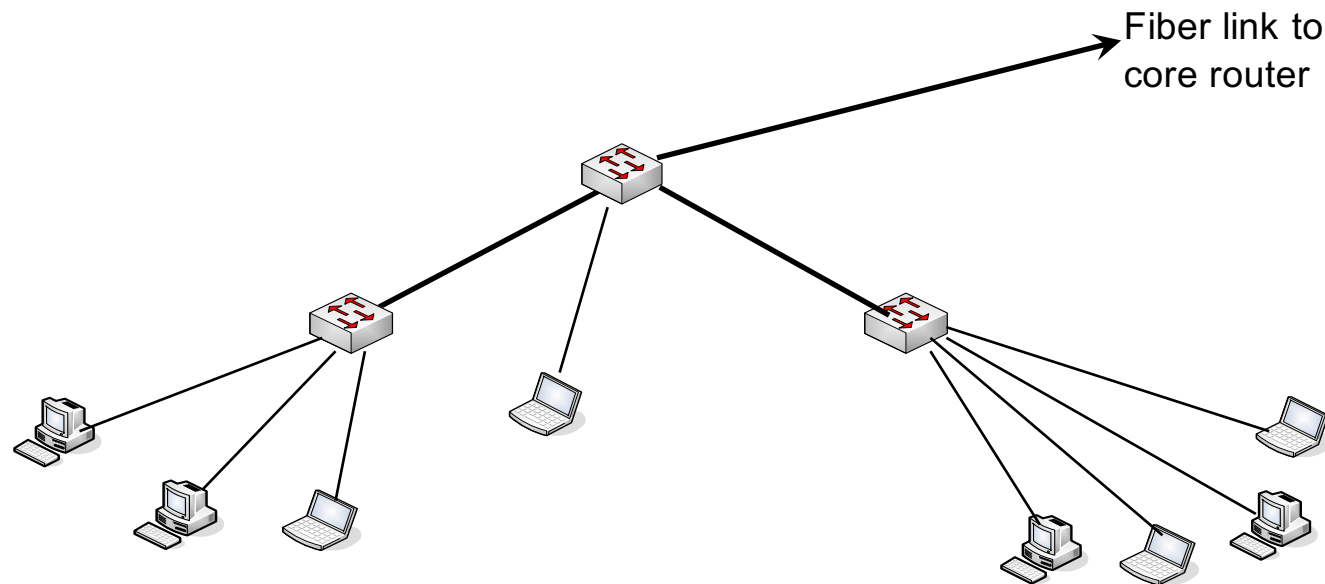


UNIVERSITY OF OREGON



# Edge Networks Continued

- And keep adding switches to get to the final configuration

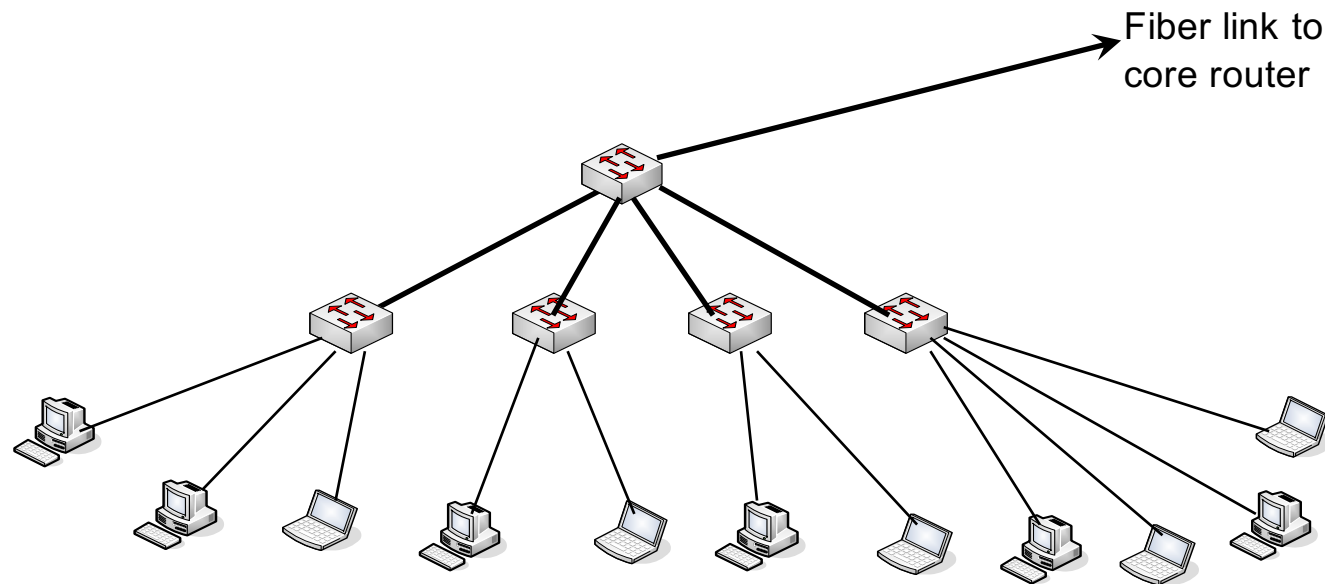


UNIVERSITY OF OREGON



# Edge Networks Continued

- And keep adding switches to get to the final configuration



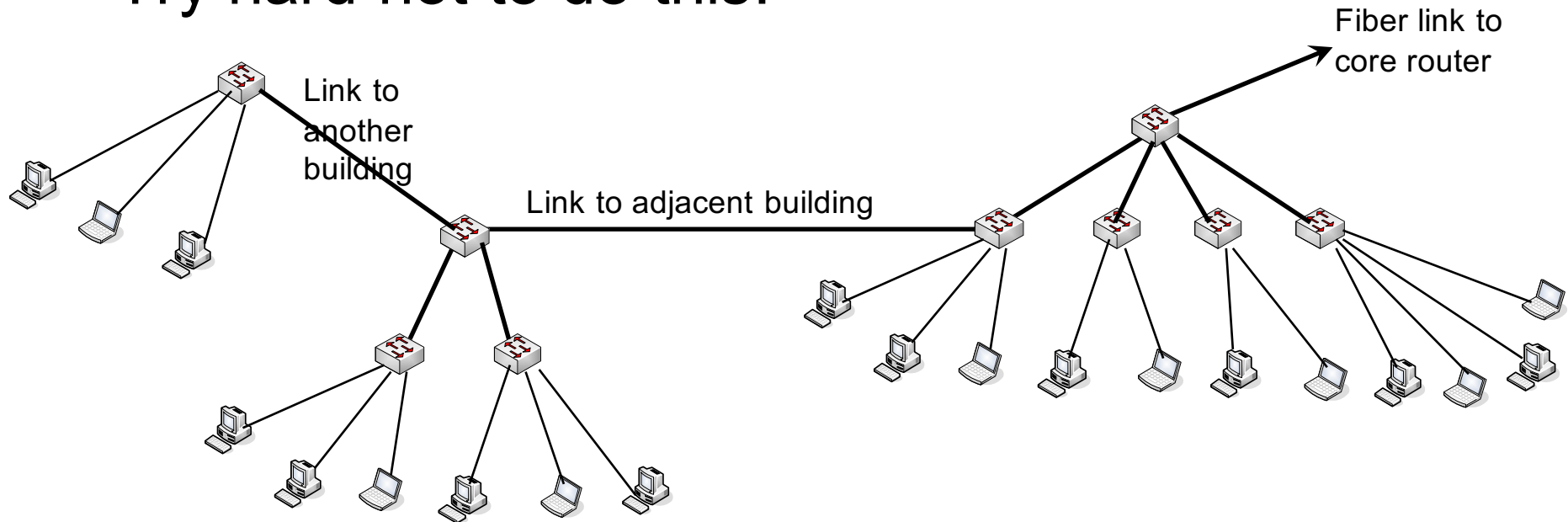
UNIVERSITY OF OREGON





# Edge Networks Continued

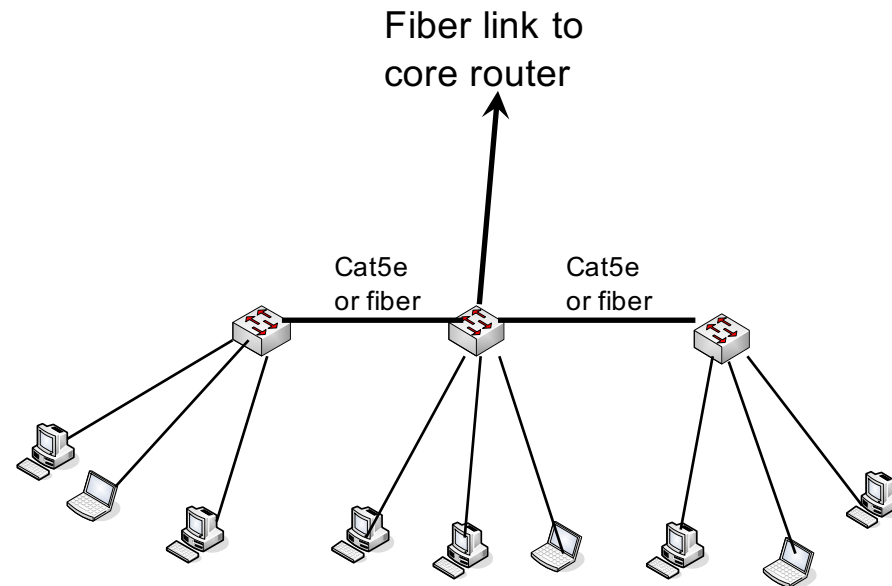
- Resist the urge to save money by breaking this model and daisy chaining networks or buildings together
- Try hard not to do this:



UNIVERSITY OF OREGON

# Edge Networks Continued

- There are cases where you can serve multiple small buildings with one subnet.
- Do it carefully.



UNIVERSITY OF OREGON



# Core Network



UNIVERSITY OF OREGON



# Routing versus Switching

## Layer 2 versus Layer 3

- Routers provide more isolation between devices (they stop broadcasts)
- Routing is more complicated, but also more sophisticated and can make more efficient use of the network, particularly if there are redundancy elements such as loops



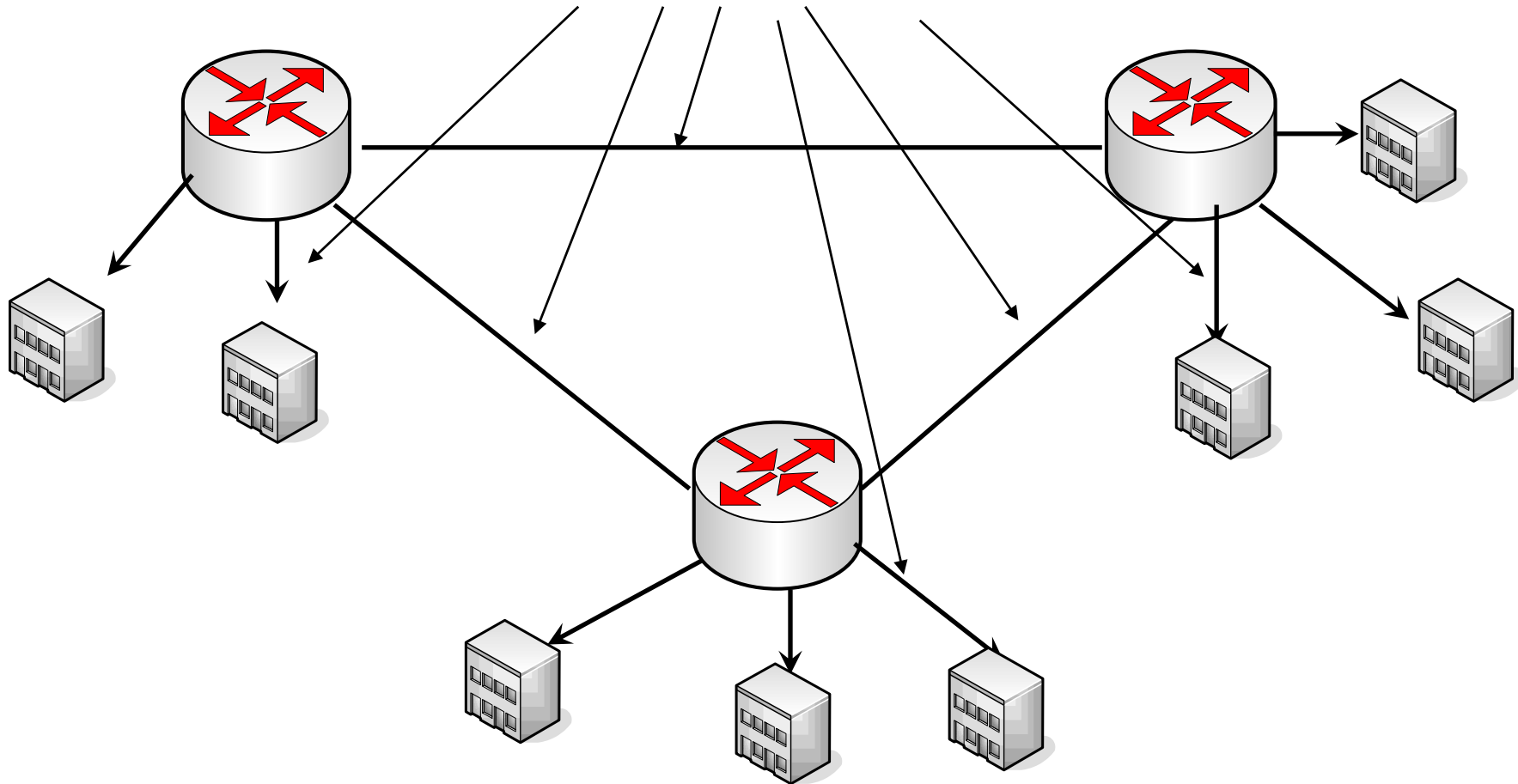
# Layer 3 Switches

- Many vendors use the term “Layer 3 Switch”.
- These are contradictory terms
  - Layer 3 = Routing
  - Switch = Layer 2
- What vendors mean is that it is a device that can be configured as a router or a switch or possibly both at the same time.



# Switching versus Routing

These links must be routed, not switched



UNIVERSITY OF OREGON

# Core Network

- Reliability is the key
  - remember many users and possibly your whole network relies on the core
- May have one or more network core locations
- Core location must have reliable power
  - UPS battery backup (redundant UPS as your network evolves)
  - Generator
  - Grounding and bonding
- Core location must have reliable air conditioning

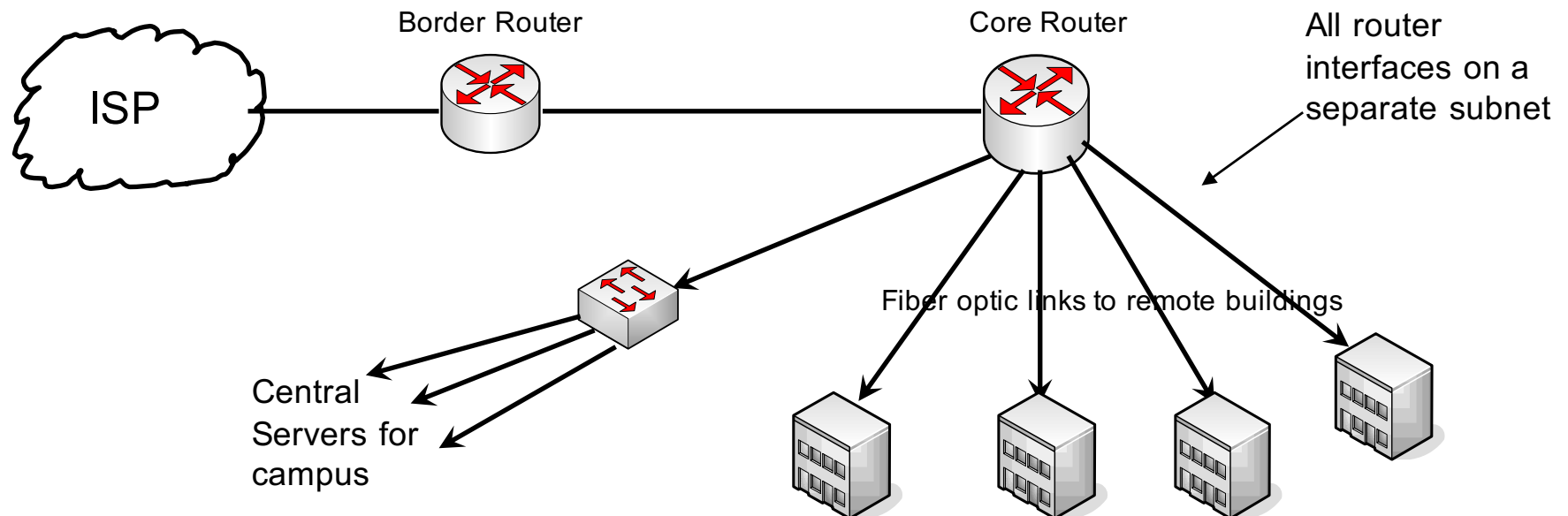


UNIVERSITY OF OREGON



# Core Network

- At the core of your network should be routers – you must route, not switch.
- Routers give isolation between subnets
- A simple core:



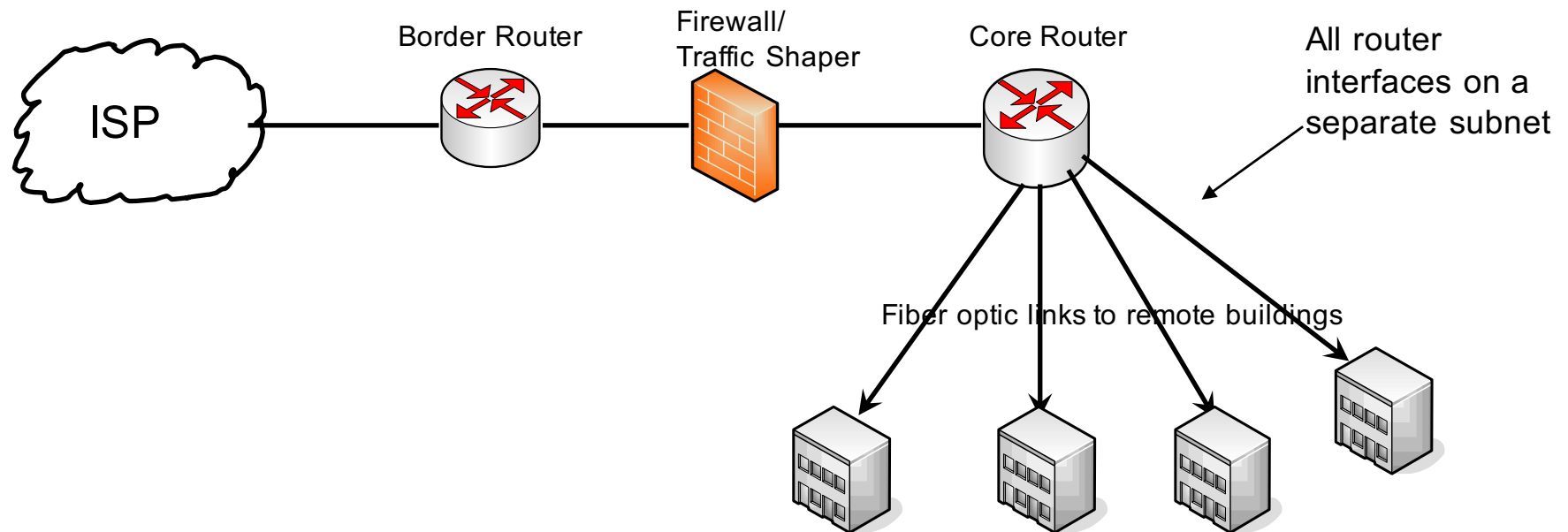
UNIVERSITY OF OREGON





# Where to put Firewalls

- Security devices are usually placed “in line”
- This means that the speed of the firewall affects access to the outside world
- This is a typical design:

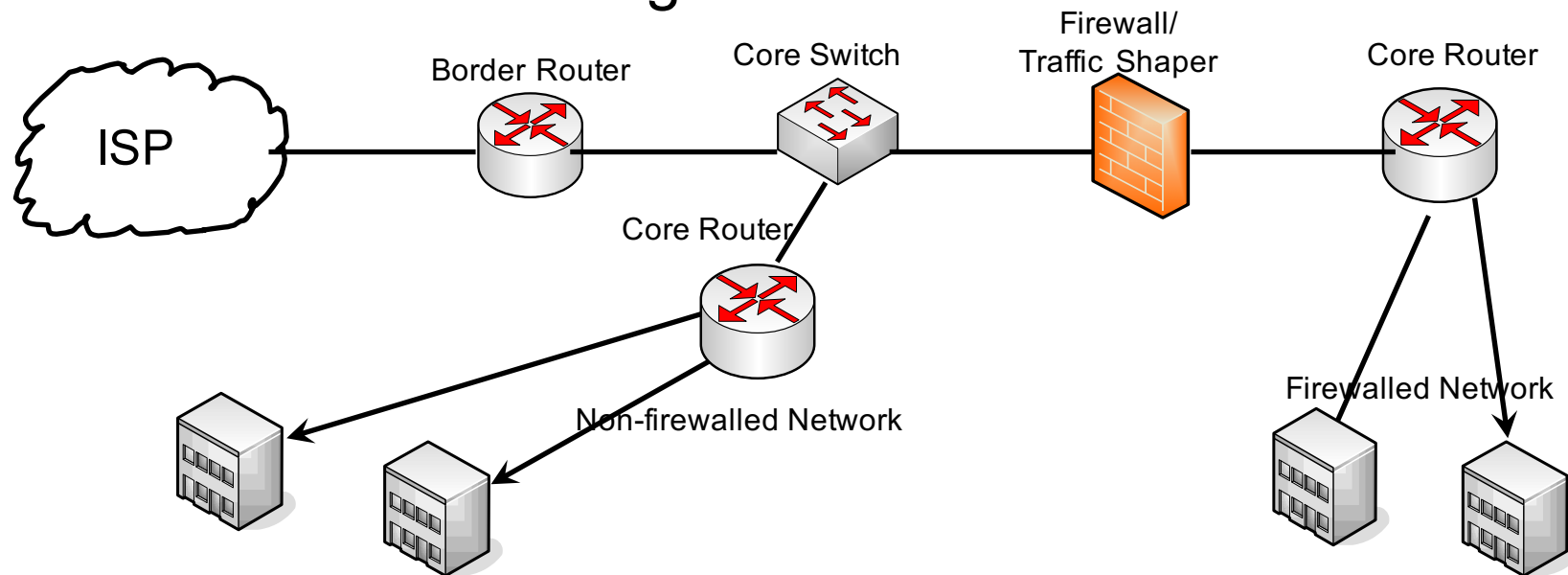


UNIVERSITY OF OREGON



# Where to put Firewalls

- As Campus Networks have gotten better bandwidth, the firewall becomes a bottleneck.
- Can move part of your network from behind the firewall to allow full bandwidth, un-filtered access to the Internet
- Recommended Configuration:

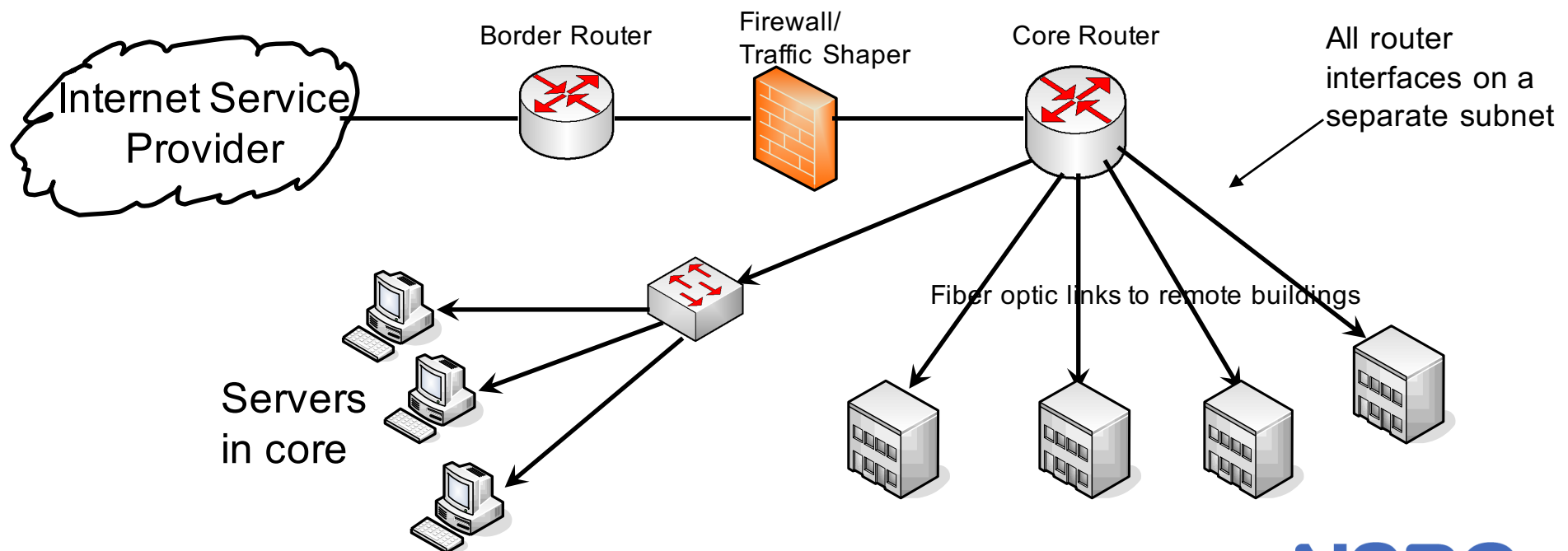


UNIVERSITY OF OREGON



# Where to put Servers?

- Servers should never be on the same subnet as users
- Should be on a separate subnet off of the core router
- Servers should be at your core location where there is good power and air conditioning

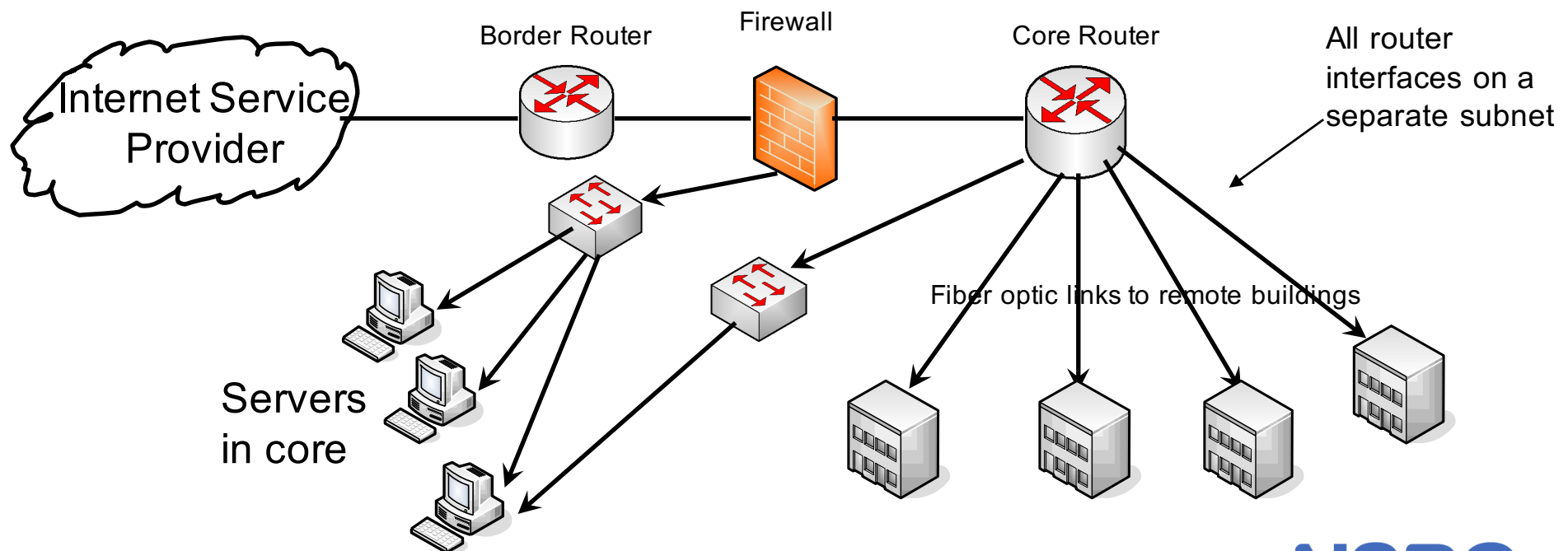


UNIVERSITY OF OREGON



# Where to put Servers?

- Sometimes you need servers that have public IP addresses
- Can put directly off of a firewall with no NAT
- Can have some servers with an interface on both the external network and an internal network

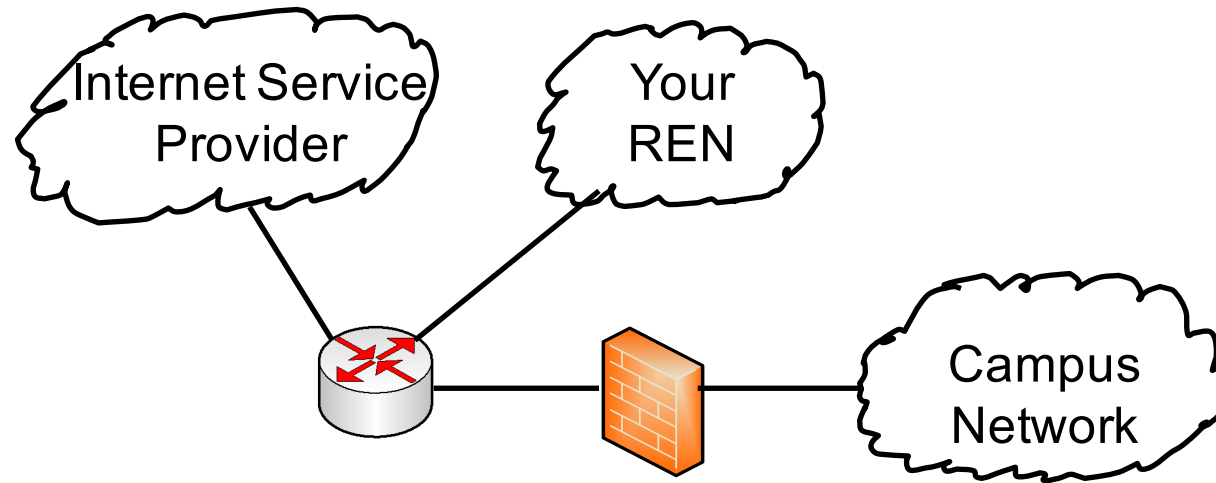


UNIVERSITY OF OREGON



# Border Router

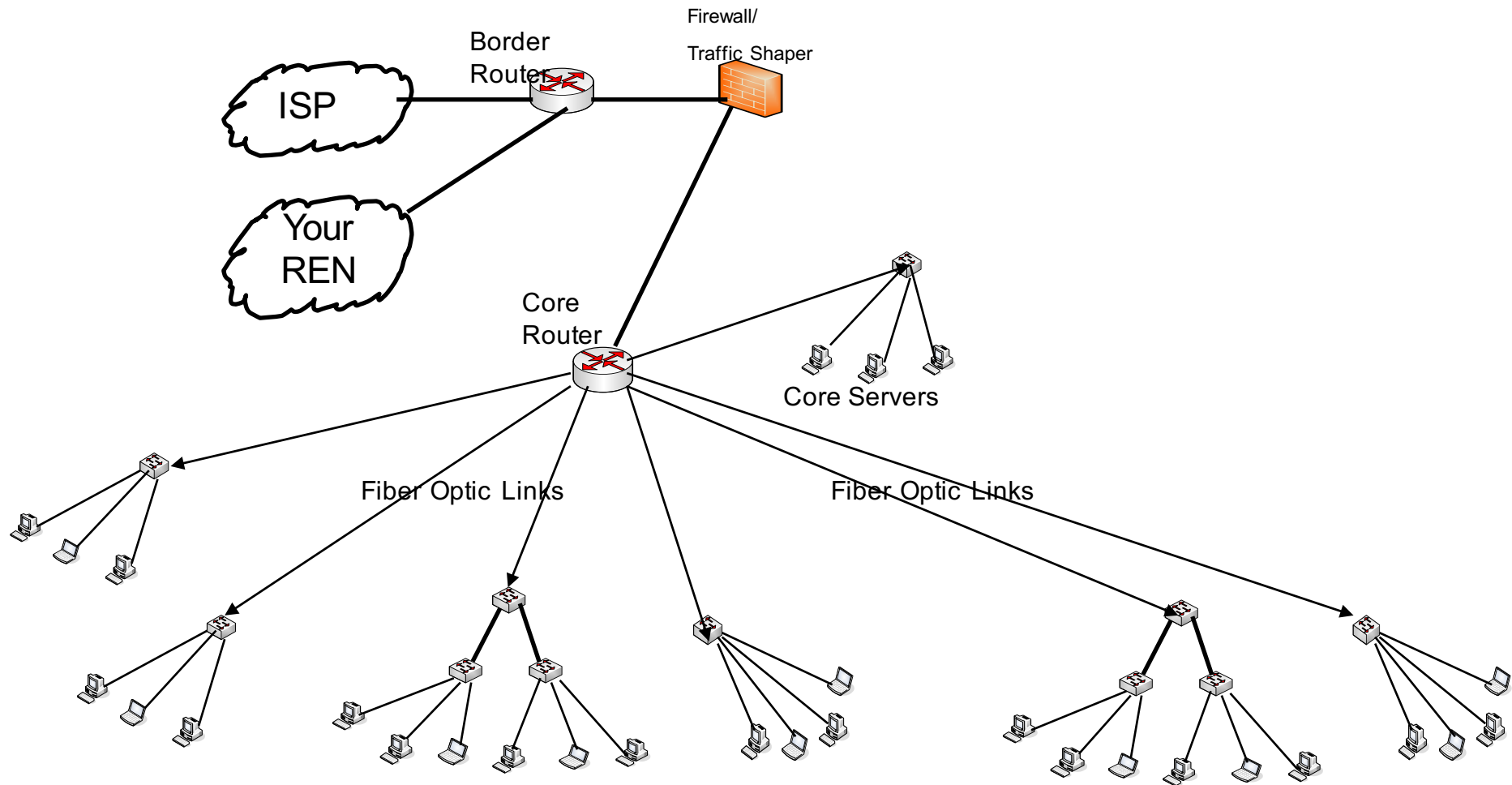
- Connects to outside world
- RENS and Peering are the reason you need them
- Must get Provider Independent IP address space to really make this work right



UNIVERSITY OF OREGON



# Putting it all Together

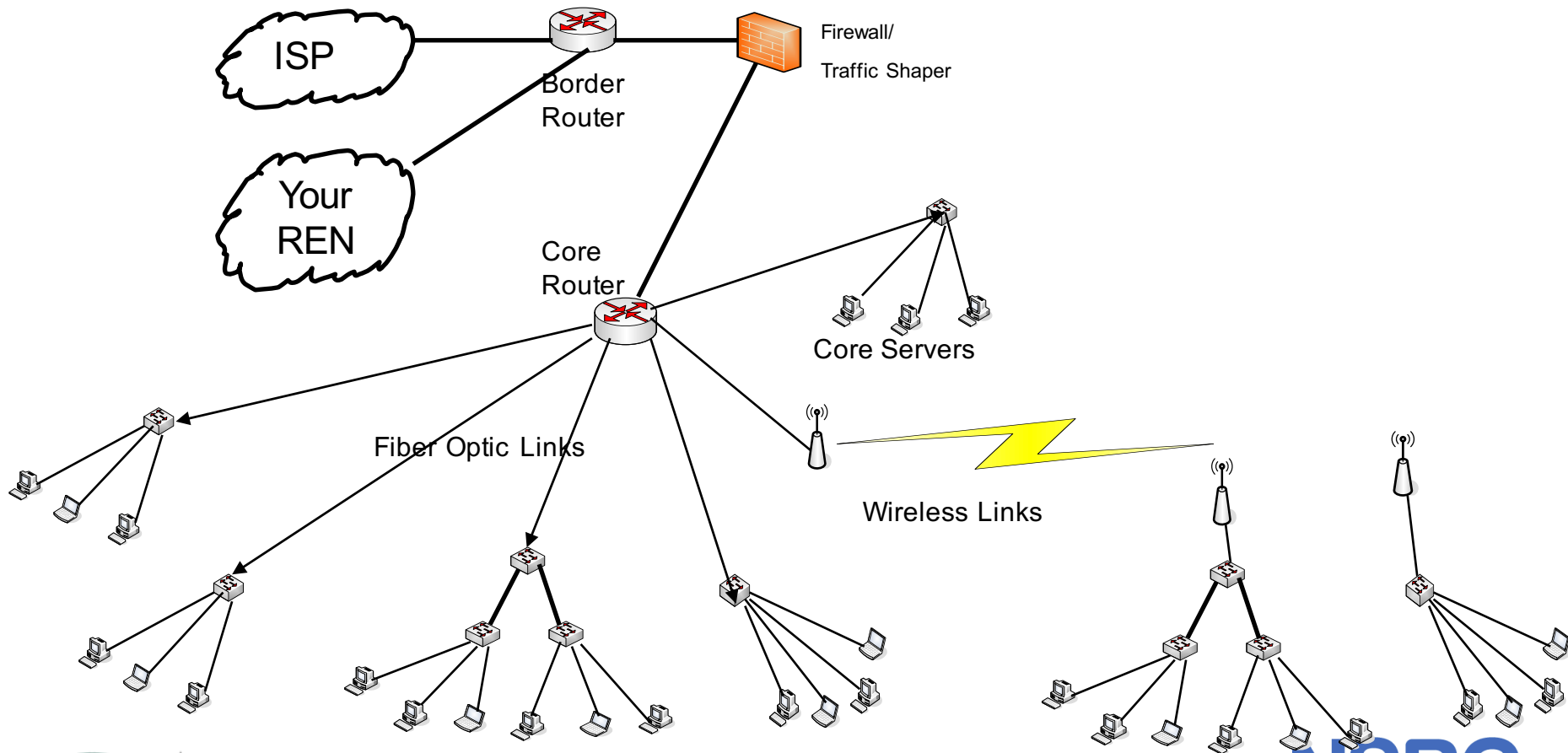


UNIVERSITY OF OREGON



# Alternative Core Designs

- Wireless Links versus Fiber



UNIVERSITY OF OREGON



# Layer 2 and 3 Summary

- Route in the core
- Switch at the edge
- Build star networks – don't daisy chain
- Buy only managed switches – re-purpose your old unmanaged switches for labs



UNIVERSITY OF OREGON

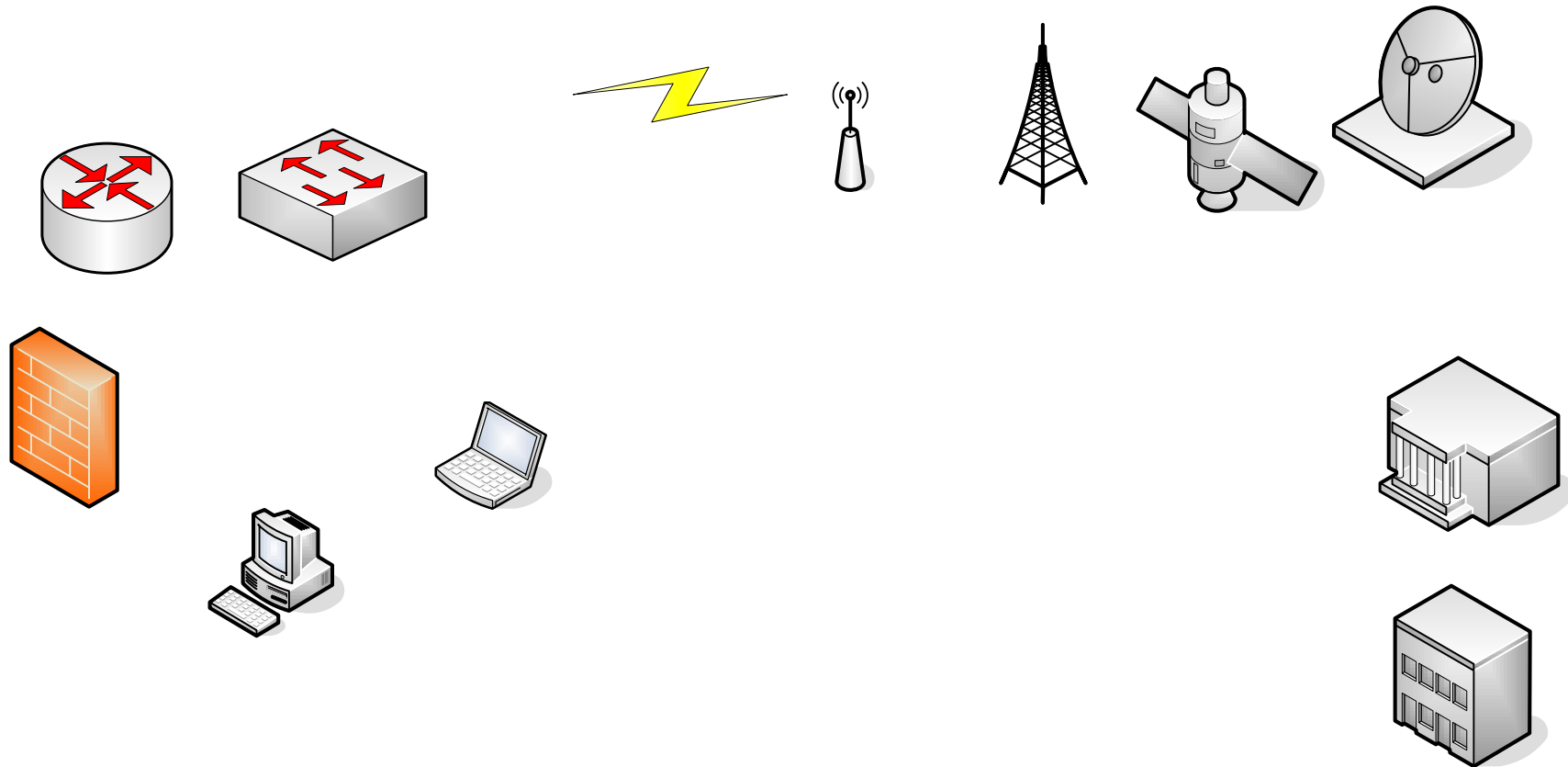




# Questions?

This document is a result of work by the Network Startup Resource Center (NSRC at <http://www.nsrc.org>). This document may be freely copied, modified, and otherwise re-used on the condition that any re-use acknowledge the NSRC as the original source.

# Symbols to use for diagrams



UNIVERSITY OF OREGON

