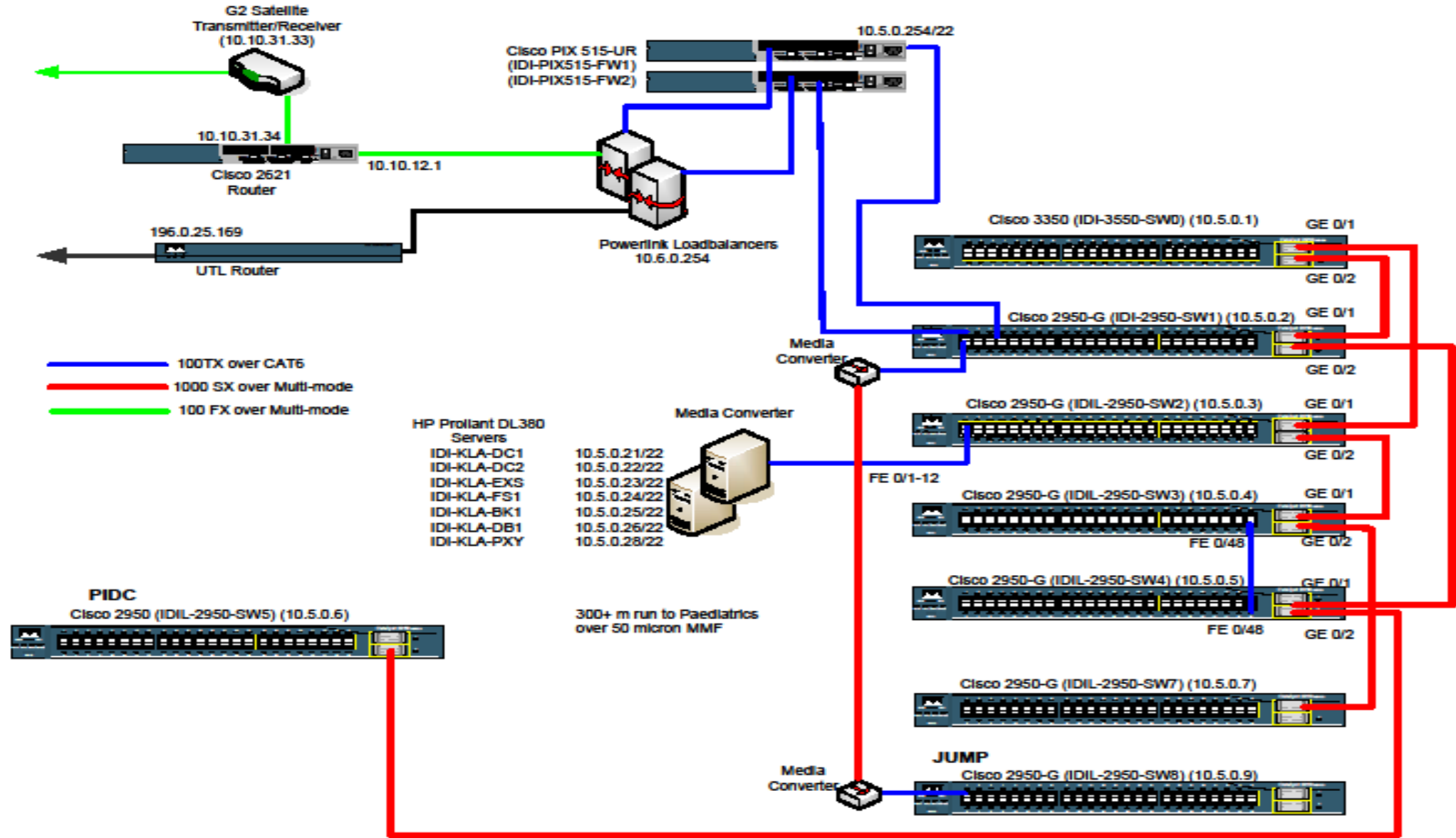


IDI-MULAGO NETWORK INFRASTRUCTURE

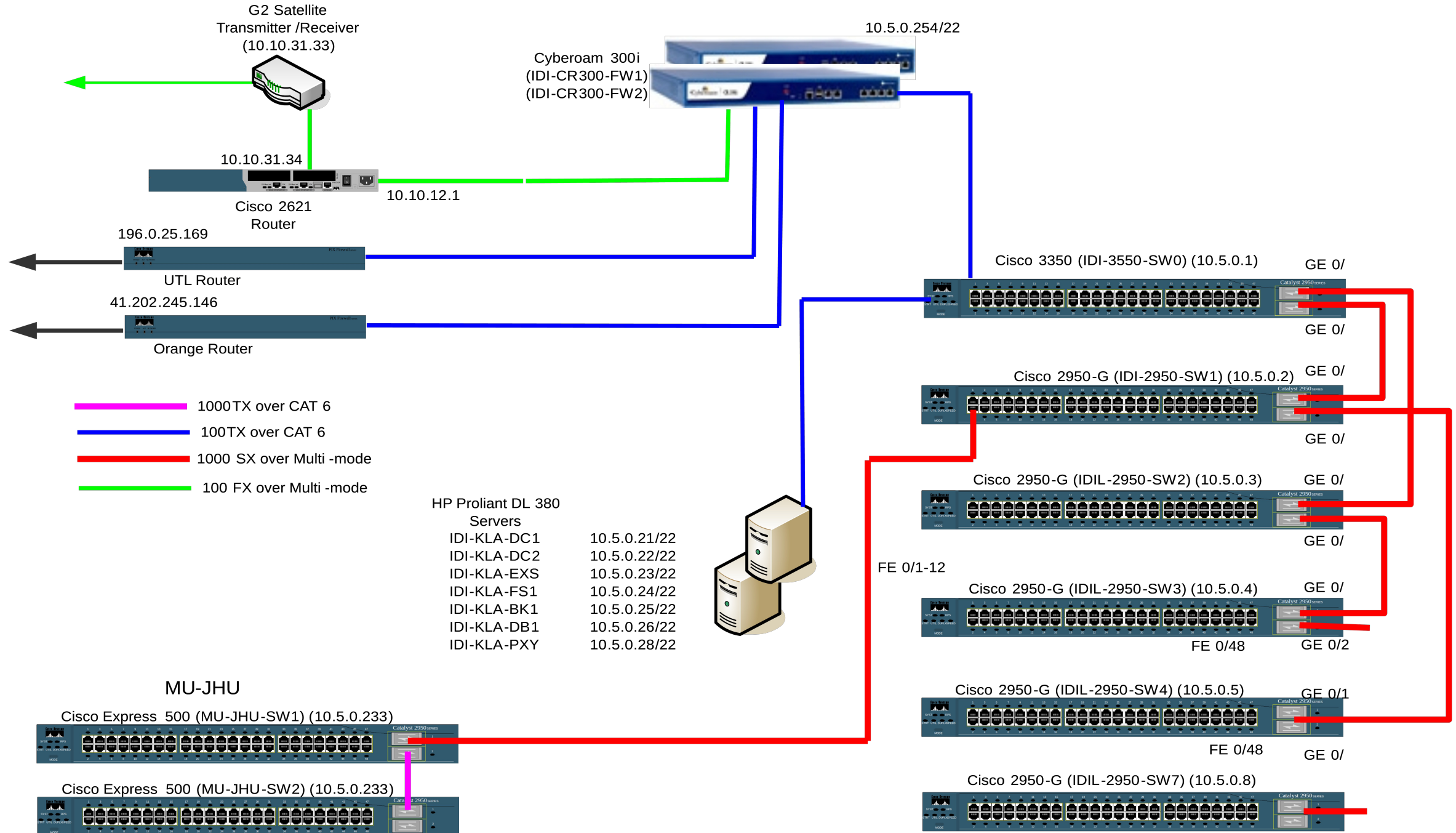
CONTENTS

- FIRST NETWORK DIAGRAM
- REVISED NETWORK DIAGRAM ONE
- REVISED NETWORK DIAGRAM TWO
- LEASED LINE LOGICAL CONNECTION
- AVAILABLE SERVICES ON THE NETWORK
- THE OBJECTIVES OF THE DEA
- AVAILABLE VLANS
- THE PROPOSED VLANS TO BE CREATED

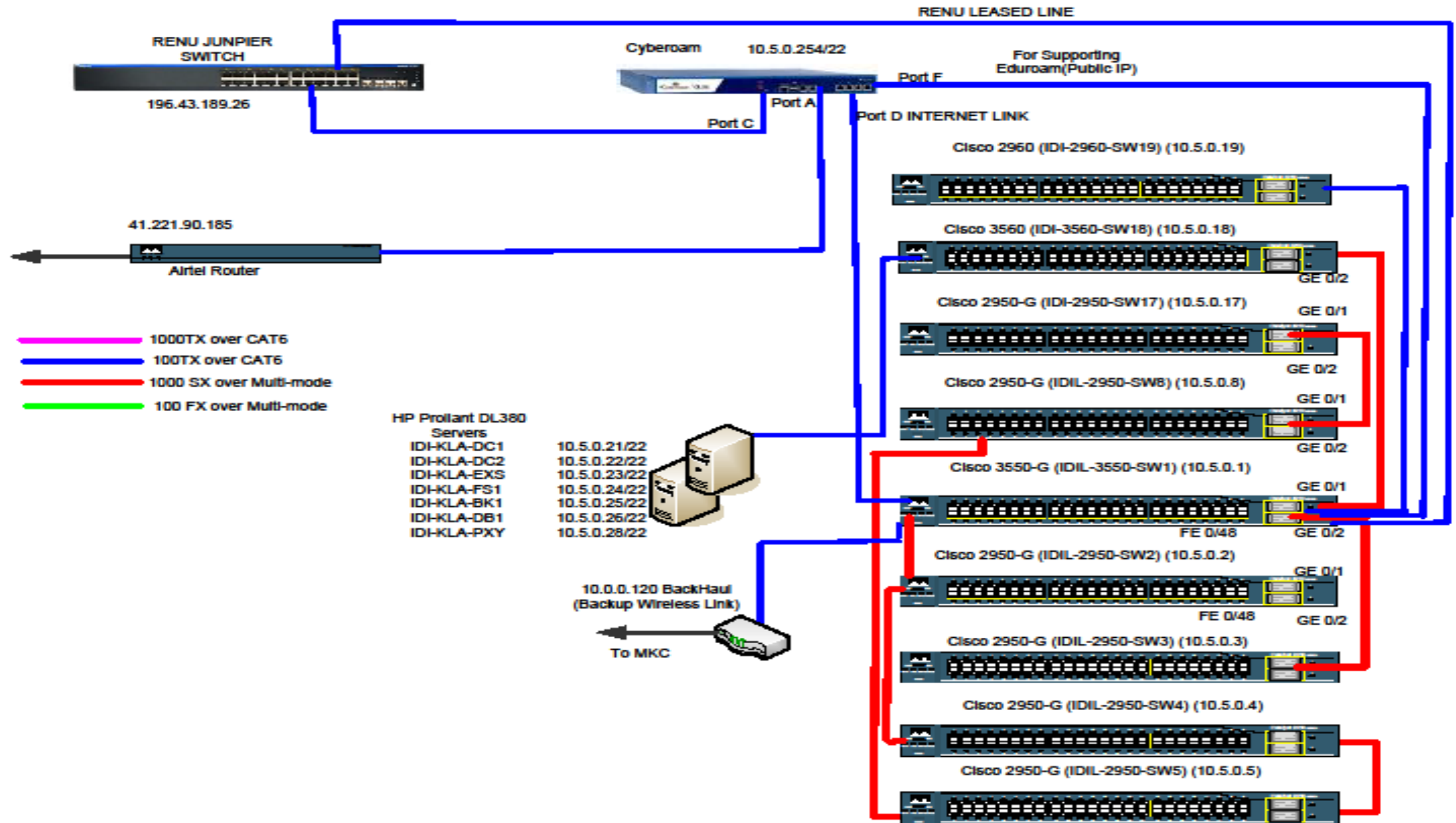
FIRST NETWORK DIAGRAM



REVISED NETWORK DIAGRAM ONE



REVISED NETWORK DIAGRAM TWO



IDI LEASED LINE LOGICAL CONNECTION



AVAILABLE SERVICES ON THE NETWORK.

- Two DHCP servers (10.5.1.0/22 & 10.5.2.0/22)
- Active Directory
- DNS server
- Exchange server
- Radius server
- HyperV (Virtualization)

THE OBJECTIVES OF THE DEA

- There should be close to zero downtime.
- Proper segmentation of the network by creating VLANs.
- Coming up with two wireless networks (VLANs), one for the visitors and another for the IDI users.
- Elimination of Daisy chains.
- Implementation of IPV6 on our network
- Among the VLANs to be created we should have one for VOIP.

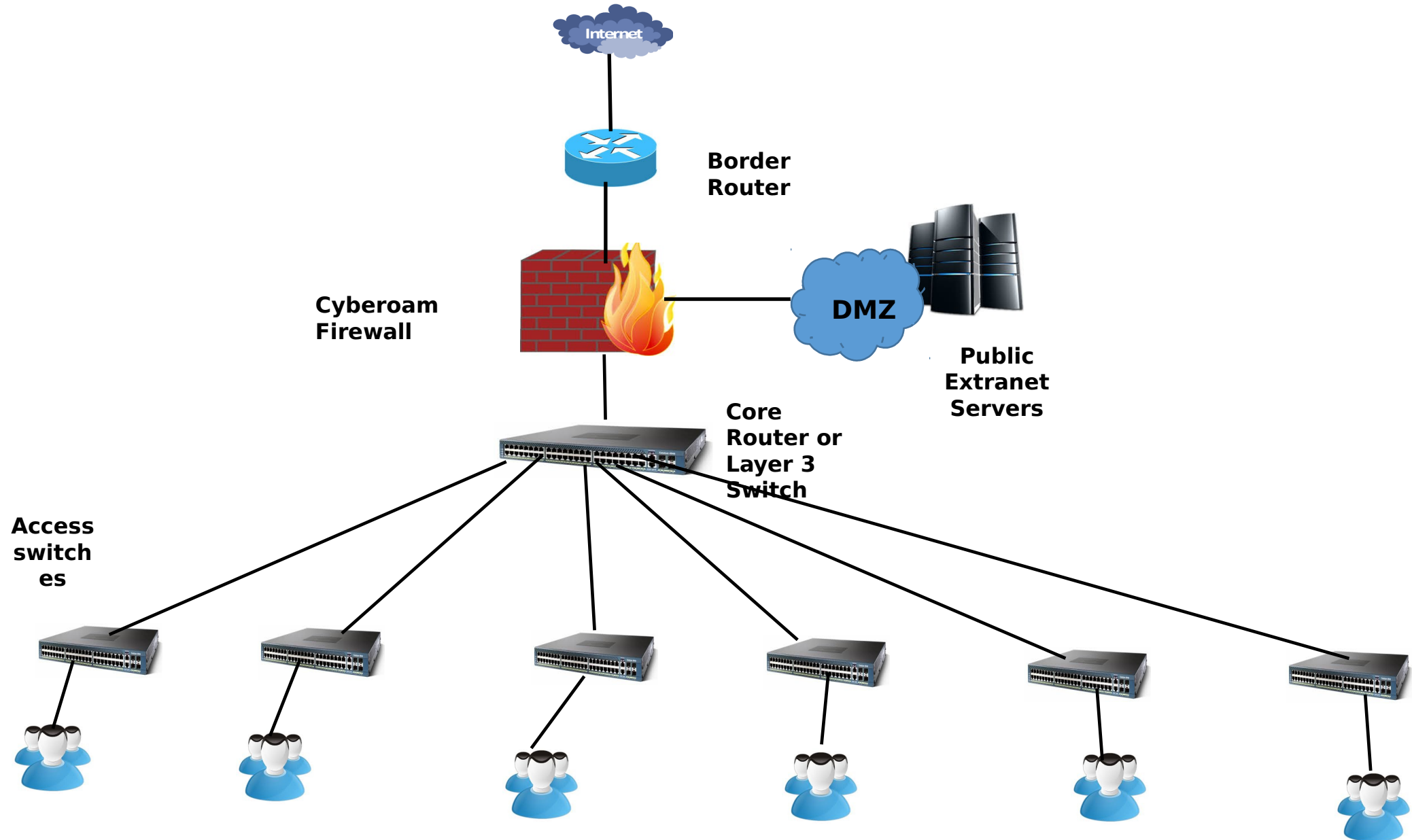
AVAILABLE VLANS

VLAN	IP	SUBNETMASK
Vlan1 (MANAGEMENT)	10.5.0.0	255.255.252.0
Vlan2 (TRAINING-NET)	10.5.4.0	255.255.252.0
Vlan3 (ATIC-NET)	10.5.8.0	255.255.252.0
Vlan4 (DOCTOR'S ROOM)	10.5.12.0	255.255.252.0
Vlan5 (LAB-NET)	10.5.16.0	255.255.252.0
Vlan6 (DMZ)	172.16.1.0	255.255.255.0
Vlan7 (EXT-W1F1 NET)	10.5.24.0	255.255.252.0
Vlan8	10.5.28.0	255.255.252.0
Vlan9 (Point to Point for Servers Publics)	10.20.20.0	255.255.255.252
Vlan10	10.10.10.0	255.255.255.240
Vlan70 (Public IP Server Network) Eduroam		

THE PROPOSED VLANS TO BE CREATED

- VOIP Vlan.
- Visitors' Wireless Vlan
- IDI users' Wireless Vlan
- Servers/ Printers' Vlan
- Users' Vlan
- Corelab Vlan
- Netapp Vlan

Recommended Network setups.



Management VLAN

